

Product datasheet for **AP50764PU-N**

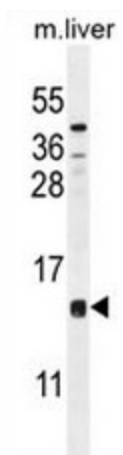
CCDC126 (C-term) Rabbit Polyclonal Antibody

Product data:

Product Type:	Primary Antibodies
Applications:	WB
Recommended Dilution:	ELISA: 1/1000. Western blot: 1/100 - 1/500.
Reactivity:	Human, Mouse
Host:	Rabbit
Isotype:	Ig
Clonality:	Polyclonal
Immunogen:	KLH conjugated synthetic peptide between 80-110 amino acids from the C-terminal region of human CCDC126
Specificity:	This antibody reacts to CCDC126.
Formulation:	PBS State: Aff - Purified State: Liquid purified Ig fraction Preservative: 0.09% (W/V) sodium azide
Concentration:	lot specific
Purification:	Affinity chromatography on protein A
Conjugation:	Unconjugated
Storage:	Store undiluted at 2-8°C for one month or (in aliquots) at -20°C for longer. Avoid repeated freezing and thawing.
Stability:	Shelf life: one year from despatch.
Predicted Protein Size:	15668 Da
Gene Name:	coiled-coil domain containing 126
Database Link:	Entrez Gene 90693 Human Q96EE4
Synonyms:	LOC90693
Protein Families:	Transmembrane



[View online »](#)

Product images:

CCDC126 Antibody (C-term) western blot analysis in mouse liver tissue lysates (35ug/lane). This demonstrates the CCDC126 antibody detected the CCDC126 protein (arrow).