

## Product datasheet for **AP50761PU-N**

### CCDC122 (C-term) Rabbit Polyclonal Antibody

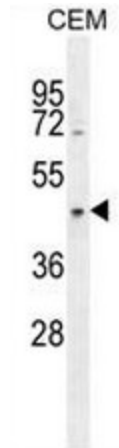
#### Product data:

Product Type:	Primary Antibodies
Applications:	FC, IHC, WB
Recommended Dilution:	<b>ELISA:</b> 1/1000. <b>Western blot:</b> 1/100 - 1/500. <b>Immunohistochemistry on paraffin sections:</b> 1/50 - 1/100. <b>Flow Cytometry:</b> 1/10 - 1/50.
Reactivity:	Human
Host:	Rabbit
Isotype:	Ig
Clonality:	Polyclonal
Immunogen:	KLH conjugated synthetic peptide between 206-235 amino acids from the C-terminal region of human CCDC122
Specificity:	This antibody reacts CCDC122.
Formulation:	PBS State: Aff - Purified State: Liquid purified Ig fraction Preservative: 0.09% (W/V) sodium azide
Concentration:	lot specific
Purification:	Affinity chromatography on Protein A
Conjugation:	Unconjugated
Storage:	Store undiluted at 2-8°C for one month or (in aliquots) at -20°C for longer. Avoid repeated freezing and thawing.
Stability:	Shelf life: one year from despatch.
Predicted Protein Size:	32206 Da
Gene Name:	coiled-coil domain containing 122
Database Link:	<a href="#">Entrez Gene 160857 Human</a> <a href="#">Q5T0U0</a>
Synonyms:	Coiled-coil domain-containing protein 122

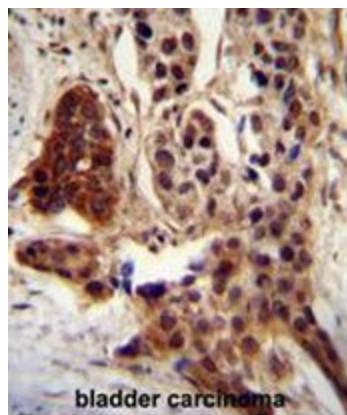


[View online »](#)

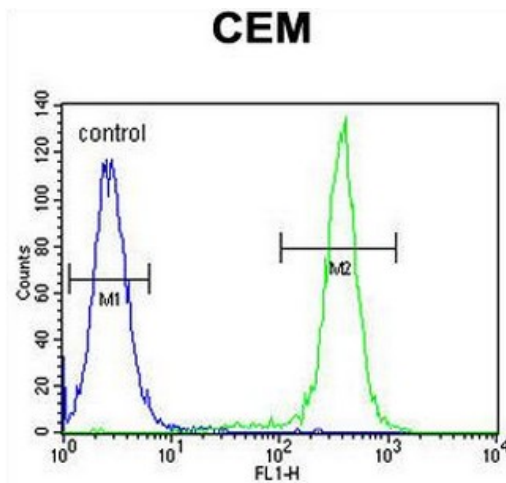
**Product images:**



CCDC122 Antibody (C-term) western blot analysis in CEM cell line lysates (35ug/lane). This demonstrates the CCDC122 antibody detected the CCDC122 protein (arrow).



CCDC122 antibody (C-term) immunohistochemistry analysis in formalin fixed and paraffin embedded human bladder carcinoma followed by peroxidase conjugation of the secondary antibody and DAB staining. This data demonstrates the use of CCDC122 antibody (C-term) for immunohistochemistry. Clinical relevance has not been evaluated.



CCDC122 Antibody (C-term) flow cytometric analysis of CEM cells (right histogram) compared to a negative control cell (left histogram). FITC-conjugated goat-anti-rabbit secondary antibodies were used for the analysis.