

## Product datasheet for **AP50756PU-N**

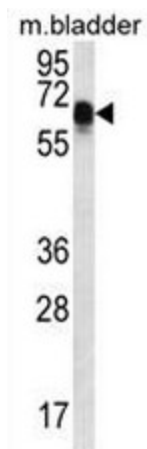
### CCDC102A (C-term) Rabbit Polyclonal Antibody

#### Product data:

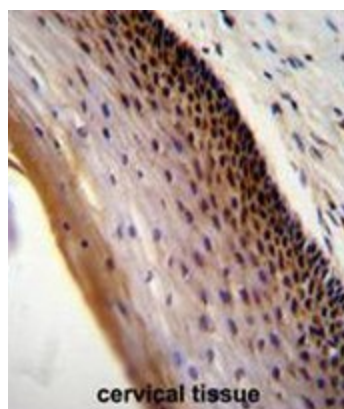
Product Type:	Primary Antibodies
Applications:	IHC, WB
Recommended Dilution:	<b>ELISA:</b> 1/1000. <b>Western blot:</b> 1/100 - 1/500. <b>Immunohistochemistry on paraffin:</b> 1/50 - 1/100.
Reactivity:	Human, Mouse
Host:	Rabbit
Isotype:	Ig
Clonality:	Polyclonal
Immunogen:	KLH conjugated synthetic peptide between 408-438 amino acids from the C-terminal region of human CCDC102A.
Specificity:	This antibody reacts to CCDC102A.
Formulation:	PBS State: Aff - Purified State: Liquid purified Ig fraction Preservative: 0.09% (W/V) sodium azide
Concentration:	lot specific
Purification:	Affinity chromatography on Protein A
Conjugation:	Unconjugated
Storage:	Store undiluted at 2-8°C for one month or (in aliquots) at -20°C for longer. Avoid repeated freezing and thawing.
Stability:	Shelf life: one year from despatch.
Predicted Protein Size:	62596 Da
Gene Name:	coiled-coil domain containing 102A
Database Link:	<a href="#">Entrez Gene 234582 Mouse</a> <a href="#">Entrez Gene 92922 Human</a> <a href="#">Q96A19</a>
Synonyms:	MGC10992; MGC13119



[View online »](#)

**Product images:**

CCDC102A Antibody (C-term) western blot analysis in mouse bladder tissue lysates (35ug/lane). This demonstrates the CCDC102A antibody detected the CCDC102A protein (arrow).



CCDC102A Antibody (C-term) immunohistochemistry analysis in formalin fixed and paraffin embedded human cervical tissue followed by peroxidase conjugation of the secondary antibody and DAB staining. This data demonstrates the use of CCDC102A Antibody (C-term) for immunohistochemistry. Clinical relevance has not been evaluated.