

## Product datasheet for **AP50752PU-N**

### CCDC33 (C-term) Rabbit Polyclonal Antibody

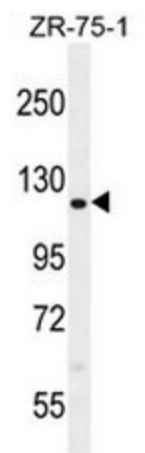
#### Product data:

Product Type:	Primary Antibodies
Applications:	WB
Recommended Dilution:	<b>ELISA:</b> 1/1000. <b>Western blot:</b> 1/100 - 1/500.
Reactivity:	Human
Host:	Rabbit
Isotype:	Ig
Clonality:	Polyclonal
Immunogen:	KLH conjugated synthetic peptide between 873-901 amino acids from the C-terminal region of human CCD33
Specificity:	This antibody reacts to CCD33.
Formulation:	PBS State: Aff - Purified State: Liquid purified Ig fraction Preservative: 0.09% (W/V) sodium azide
Concentration:	lot specific
Purification:	Affinity chromatography on Protein A
Conjugation:	Unconjugated
Storage:	Store undiluted at 2-8°C for one month or (in aliquots) at -20°C for longer. Avoid repeated freezing and thawing.
Stability:	Shelf life: one year from despatch.
Predicted Protein Size:	107216 Da
Gene Name:	coiled-coil domain containing 33
Database Link:	<a href="#">Entrez Gene 80125 Human</a> <a href="#">Q8N5R6</a>
Synonyms:	Cancer/testis antigen 61, CT61



[View online »](#)

## Product images:



CCD33 Antibody (C-term) western blot analysis in ZR-75-1 cell line lysates (35ug/lane). This demonstrates the CCD33 antibody detected the CCD33 protein (arrow).