

## Product datasheet for **AP50750PU-N**

### CC2D1A (N-term) Rabbit Polyclonal Antibody

#### Product data:

Product Type:	Primary Antibodies
Applications:	WB
Recommended Dilution:	<b>ELISA:</b> 1/1000. <b>Western blot:</b> 1/100 - 1/500.
Reactivity:	Human
Host:	Rabbit
Isotype:	Ig
Clonality:	Polyclonal
Immunogen:	KLH conjugated synthetic peptide between 142-172 amino acids from the N-terminal region of human CC2D1A
Specificity:	This antibody reacts to CC2D1A.
Formulation:	PBS State: Aff - Purified State: Liquid purified Ig fraction Preservative: 0.09% (W/V) sodium azide
Concentration:	lot specific
Purification:	Affinity chromatography on Protein A
Conjugation:	Unconjugated
Storage:	Store undiluted at 2-8°C for one month or (in aliquots) at -20°C for longer. Avoid repeated freezing and thawing.
Stability:	Shelf life: one year from despatch.
Predicted Protein Size:	104062 Da
Gene Name:	coiled-coil and C2 domain containing 1A
Database Link:	<a href="#">Entrez Gene 54862 Human</a> <a href="#">Q6P1N0</a>

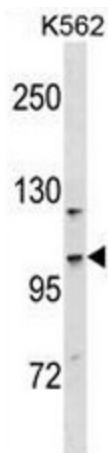


[View online »](#)

**Background:** CC2D1A is a transcriptional repressor that binds to a conserved 14-bp 5'-repressor element and regulates expression of the 5-hydroxytryptamine (serotonin) receptor 1A gene in neuronal cells. The DNA binding and transcriptional repressor activities of the protein are inhibited by calcium. A mutation in this gene results in nonsyndromic mental retardation-3.

**Synonyms:** Freud-1

**Product images:**



CC2D1A Antibody (N-term) western blot analysis in K562 cell line lysates (35ug/lane). This demonstrates the CC2D1A antibody detected the CC2D1A protein (arrow).