

## Product datasheet for **AP50748PU-N**

### DIPK2A (Center) Rabbit Polyclonal Antibody

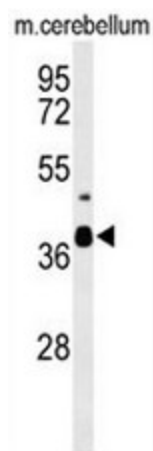
#### Product data:

Product Type:	Primary Antibodies
Applications:	IHC, WB
Recommended Dilution:	<b>ELISA:</b> 1/1000. <b>Western blot:</b> 1/100 - 1/500. <b>Immunohistochemistry on paraffin sections:</b> 1/50 - 1/100.
Reactivity:	Human, Mouse
Host:	Rabbit
Isotype:	Ig
Clonality:	Polyclonal
Immunogen:	KLH conjugated synthetic peptide between 166~196 amino acids from the Central region of human CC058
Specificity:	This antibody reacts to CC058.
Formulation:	PBS State: Aff - Purified State: Liquid purified Ig fraction Preservative: 0.09% (W/V) sodium azide
Concentration:	lot specific
Purification:	Affinity chromatography on Protein A
Conjugation:	Unconjugated
Storage:	Store undiluted at 2-8°C for one month or (in aliquots) at -20°C for longer. Avoid repeated freezing and thawing.
Stability:	Shelf life: one year from despatch.
Predicted Protein Size:	49482 Da
Gene Name:	chromosome 3 open reading frame 58
Database Link:	<a href="#">Entrez Gene 205428 Human Q8NDZ4</a>
Synonyms:	Golgi Protein of 49 kDa, GoPro49, Hypoxia and AKT-induced stem cell factor, HASF, Deleted in autism protein 1

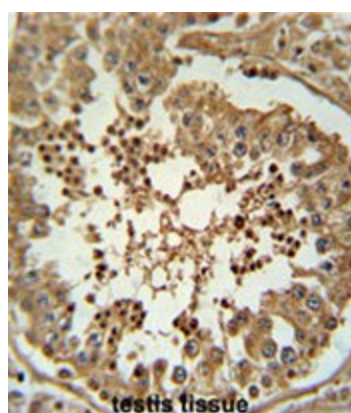


[View online »](#)

## Product images:



Western blot analysis of CC058 Antibody (Center) in mouse cerebellum tissue lysates (35ug/lane). CC058 (arrow) was detected using the purified Pab.



CC058 Antibody (Center) immunohistochemistry analysis in formalin fixed and paraffin embedded human testis tissue followed by peroxidase conjugation of the secondary antibody and DAB staining. This data demonstrates the use of the CC058 Antibody (Center) for immunohistochemistry. Clinical relevance has not been evaluated.