

Product datasheet for **AP50746PU-N**

CBX8 (Center) Rabbit Polyclonal Antibody

Product data:

Product Type:	Primary Antibodies
Applications:	WB
Recommended Dilution:	ELISA: 1/1000. Western blot: 1/100 - 1/500.
Reactivity:	Human, Mouse
Host:	Rabbit
Isotype:	Ig
Clonality:	Polyclonal
Immunogen:	KLH conjugated synthetic peptide between 160-189 amino acids from the Central region of human CBX8
Specificity:	This antibody reacts to CBX8.
Formulation:	PBS State: Aff - Purified State: Liquid purified Ig fraction Preservative: 0.09% (W/V) sodium azide
Concentration:	lot specific
Purification:	Affinity chromatography on Protein A
Conjugation:	Unconjugated
Storage:	Store undiluted at 2-8°C for one month or (in aliquots) at -20°C for longer. Avoid repeated freezing and thawing.
Stability:	Shelf life: one year from despatch.
Predicted Protein Size:	43396 Da
Gene Name:	chromobox 8
Database Link:	Entrez Gene 30951 Mouse Entrez Gene 57332 Human Q9HC52



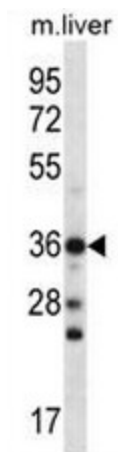
[View online »](#)

Background: Component of the Polycomb group (PcG) multiprotein PRC1 complex, a complex required to maintain the transcriptionally repressive state of many genes, including Hox genes, throughout development. PcG PRC1 complex acts via chromatin remodeling and modification of histones; it mediates monoubiquitination of histone H2A 'Lys-119', rendering chromatin heritably changed in its expressibility.

Synonyms: Chromobox protein homolog 8, Polycomb 3 homolog, Rectachrome 1, PC3, RC1

Protein Families: Transcription Factors

Product images:



CBX8 Antibody (Center) western blot analysis in mouse liver tissue lysates (35ug/lane). This demonstrates the CBX8 antibody detected the CBX8 protein (arrow).