

Product datasheet for **AP50744PU-N**

CBR3 (C-term) Rabbit Polyclonal Antibody

Product data:

Product Type:	Primary Antibodies
Applications:	WB
Recommended Dilution:	ELISA: 1/1000. Western blot: 1/50 - 1/100.
Reactivity:	Human
Host:	Rabbit
Isotype:	Ig
Clonality:	Polyclonal
Immunogen:	KLH conjugated synthetic peptide between 194-224 amino acids from the C-terminal region of human CBR3
Specificity:	This antibody reacts to CBR3.
Formulation:	PBS State: Purified State: Liquid purified Ig fraction Preservative: 0.09% (W/V) sodium azide
Concentration:	lot specific
Purification:	Saturated Ammonium Sulfate (SAS) precipitation
Conjugation:	Unconjugated
Storage:	Store undiluted at 2-8°C for one month or (in aliquots) at -20°C for longer. Avoid repeated freezing and thawing.
Stability:	Shelf life: one year from despatch.
Predicted Protein Size:	30850 Da
Gene Name:	carbonyl reductase 3
Database Link:	Entrez Gene 874 Human O75828



[View online »](#)

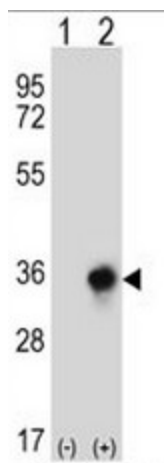
Background: Carbonyl reductase 3 catalyzes the reduction of a large number of biologically and pharmacologically active carbonyl compounds to their corresponding alcohols. The enzyme is classified as a monomeric NADPH-dependent oxidoreductase. CBR3 contains three exons spanning 11.2 kilobases and is closely linked to another carbonyl reductase gene - CBR1.

Synonyms: CBR3

Protein Families: Druggable Genome

Protein Pathways: Arachidonic acid metabolism, Metabolic pathways

Product images:



Western blot analysis of CBR3 (arrow) using rabbit polyclonal CBR3 Antibody (C-term) (#AP12881b). 293 cell lysates (2 ug/lane) either nontransfected (Lane 1) or transiently transfected (Lane 2) with the CBR3 gene.