

Product datasheet for **AP50743PU-N**

CBLN2 (C-term) Rabbit Polyclonal Antibody

Product data:

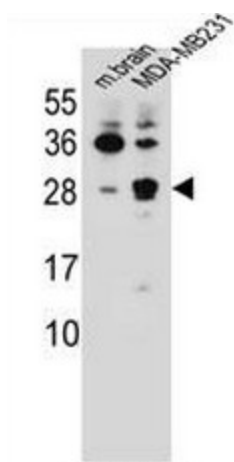
Product Type:	Primary Antibodies
Applications:	IHC, WB
Recommended Dilution:	ELISA: 1/1000. Western blot: 1/100 - 1/500.
Reactivity:	Human, Mouse
Host:	Rabbit
Isotype:	Ig
Clonality:	Polyclonal
Immunogen:	KLH conjugated synthetic peptide between 186-215 amino acids from the C-terminal region of human CBLN2
Specificity:	This antibody reacts to CBLN2.
Formulation:	PBS State: Aff - Purified State: Liquid purified Ig fraction Preservative: 0.09% (W/V) sodium azide
Concentration:	lot specific
Purification:	Affinity chromatography on Protein A
Conjugation:	Unconjugated
Storage:	Store undiluted at 2-8°C for one month or (in aliquots) at -20°C for longer. Avoid repeated freezing and thawing.
Stability:	Shelf life: one year from despatch.
Predicted Protein Size:	24084 Da
Gene Name:	cerebellin 2 precursor
Database Link:	Entrez Gene 12405 Mouse Entrez Gene 147381 Human Q8IUUK8
Background:	CBLN2, Cerebellin 2, is a secreted glycoprotein and, like Cerebellin 1, may also serve as transneuronal regulators of synaptic functions in various brain regions.



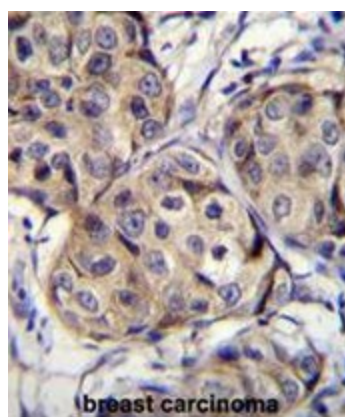
[View online »](#)

Synonyms: CBLN2

Product images:



CBLN2 Antibody (C-term) western blot analysis in mouse brain tissue and MDA-MB231 cell line lysates (35ug/lane). This demonstrates the CBLN2 antibody detected the CBLN2 protein (arrow).



CBLN2 Antibody (C-term) immunohistochemistry analysis in formalin fixed and paraffin embedded human breast carcinoma followed by peroxidase conjugation of the secondary antibody and DAB staining. This data demonstrates the use of CBLN2 Antibody (C-term) for immunohistochemistry. Clinical relevance has not been evaluated.