

Product datasheet for **AP50741PU-N**

CBARA1 (MICU1) (N-term) Rabbit Polyclonal Antibody

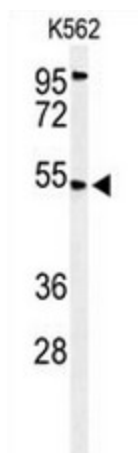
Product data:

Product Type:	Primary Antibodies
Applications:	WB
Recommended Dilution:	ELISA: 1/1000. Western blot: 1/100 - 1/500.
Reactivity:	Human
Host:	Rabbit
Isotype:	Ig
Clonality:	Polyclonal
Immunogen:	KLH conjugated synthetic peptide between 59–89 amino acids from the N-terminal region of human CBAA1
Specificity:	This antibody reacts to CBAA1.
Formulation:	PBS State: Aff - Purified State: Liquid purified Ig fraction Preservative: 0.09% (W/V) sodium azide
Concentration:	lot specific
Purification:	Affinity chromatography on Protein A
Conjugation:	Unconjugated
Storage:	Store undiluted at 2-8°C for one month or (in aliquots) at -20°C for longer. Avoid repeated freezing and thawing.
Stability:	Shelf life: one year from despatch.
Predicted Protein Size:	54351 Da
Gene Name:	mitochondrial calcium uptake 1
Database Link:	Entrez Gene 10367 Human Q9BPX6
Synonyms:	CALC, Hom s 4



[View online »](#)

Product images:



Western blot analysis of CBA1 Antibody (N-term) in K562 cell line lysates (35ug/lane). CBA1 (arrow) was detected using the purified Pab.