

Product datasheet for **AP50739PU-N**

WDPCP (C-term) Rabbit Polyclonal Antibody

Product data:

Product Type:	Primary Antibodies
Applications:	IHC, WB
Recommended Dilution:	ELISA: 1/1000. Western blot: 1/100 - 1/500. Immunohistochemistry on paraffin sections: 1/50 - 1/100.
Reactivity:	Human
Host:	Rabbit
Isotype:	Ig
Clonality:	Polyclonal
Immunogen:	KLH conjugated synthetic peptide between 679-709 amino acids from the C-terminal region of human CB086
Specificity:	This antibody reacts to CB086.
Formulation:	PBS State: Aff - Purified State: Liquid purified Ig fraction Preservative: 0.09% (W/V) sodium azide
Concentration:	lot specific
Purification:	Affinity chromatography on Protein A
Conjugation:	Unconjugated
Storage:	Store undiluted at 2-8°C for one month or (in aliquots) at -20°C for longer. Avoid repeated freezing and thawing.
Stability:	Shelf life: one year from despatch.
Predicted Protein Size:	85084 Da
Gene Name:	WD repeat containing planar cell polarity effector
Database Link:	Entrez Gene 51057 Human O95876

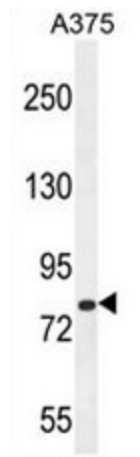


[View online »](#)

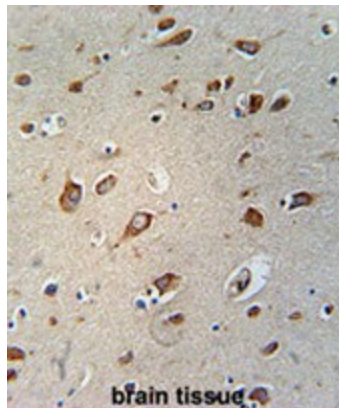
Background: The C2ORF86 gene encodes an ortholog of Drosophila 'fritz,' a cytoplasmic WD40 repeat protein that controls planar cell polarity (summarized by Kim et al., 2010 [PubMed 20671153]).

Synonyms: LOC51057

Product images:



CB086 Antibody (C-term) western blot analysis in A375 cell line lysates (35ug/lane). This demonstrates the CB086 antibody detected the CB086 protein (arrow).



CB086 Antibody (C-term) immunohistochemistry analysis in formalin fixed and paraffin embedded human brain tissue followed by peroxidase conjugation of the secondary antibody and DAB staining. This data demonstrates the use of the CB086 Antibody (C-term) for immunohistochemistry. Clinical relevance has not been evaluated.