

Product datasheet for **AP50737PU-N**

C2orf18 (SLC35F6) (C-term) Rabbit Polyclonal Antibody

Product data:

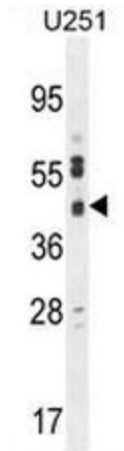
Product Type:	Primary Antibodies
Applications:	FC, IHC, WB
Recommended Dilution:	ELISA: 1/1000. Western blot: 1/100 - 1/500. Immunohistochemistry on paraffin sections: 1/50 - 1/100. Flow Cytometry: 1/10 - 1/50.
Reactivity:	Human
Host:	Rabbit
Isotype:	Ig
Clonality:	Polyclonal
Immunogen:	KLH conjugated synthetic peptide between 336-366 amino acids from the C-terminal region of human CB018
Specificity:	This antibody reacts to CB018.
Formulation:	PBS State: Aff - Purified State: Liquid purified Ig fraction Preservative: 0.09% (W/V) sodium azide
Concentration:	lot specific
Purification:	Affinity chromatography on Protein A
Conjugation:	Unconjugated
Storage:	Store undiluted at 2-8°C for one month or (in aliquots) at -20°C for longer. Avoid repeated freezing and thawing.
Stability:	Shelf life: one year from despatch.
Predicted Protein Size:	40214 Da
Gene Name:	solute carrier family 35 member F6
Database Link:	Entrez Gene 54978 Human Q8N357
Synonyms:	4930471M23Rik; 5730478O19Rik; P40; RGD1309228; Tango9



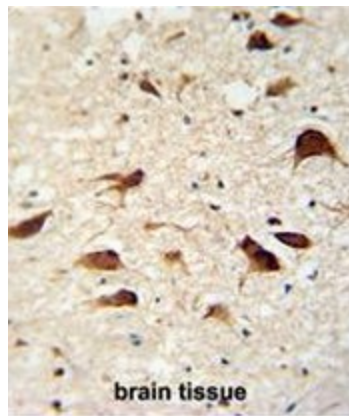
[View online »](#)

Protein Families: Transmembrane

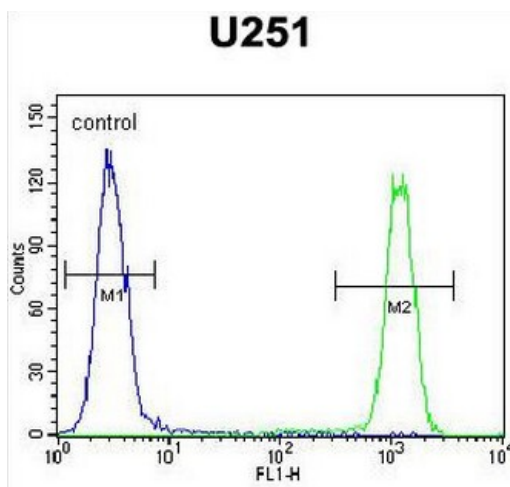
Product images:



CB018 Antibody (C-term) western blot analysis in U251 cell line lysates (35ug/lane). This demonstrates the CB018 antibody detected the CB018 protein (arrow).



CB018 antibody (C-term) immunohistochemistry analysis in formalin fixed and paraffin embedded human brain tissue followed by peroxidase conjugation of the secondary antibody and DAB staining. This data demonstrates the use of the CB018 antibody (C-term) for immunohistochemistry. Clinical relevance has not been evaluated.



CB018 Antibody (C-term) flow cytometric analysis of U251 cells (right histogram) compared to a negative control cell (left histogram). FITC-conjugated goat-anti-rabbit secondary antibodies were used for the analysis.