

Product datasheet for **AP50736PU-N**

CATSPER1 (N-term) Rabbit Polyclonal Antibody

Product data:

Product Type:	Primary Antibodies
Applications:	WB
Recommended Dilution:	ELISA: 1/1000. Western blot: 1/100 - 1/500.
Reactivity:	Human
Host:	Rabbit
Isotype:	Ig
Clonality:	Polyclonal
Immunogen:	KLH conjugated synthetic peptide between 35-65 amino acids from the N-terminal region of human CATSPER1
Specificity:	This antibody reacts to CATSPER1.
Formulation:	PBS State: Aff - Purified State: Liquid purified Ig fraction Preservative: 0.09% (W/V) sodium azide
Concentration:	lot specific
Purification:	Affinity chromatography on Protein A
Conjugation:	Unconjugated
Storage:	Store undiluted at 2-8°C for one month or (in aliquots) at -20°C for longer. Avoid repeated freezing and thawing.
Stability:	Shelf life: one year from despatch.
Predicted Protein Size:	90091 Da
Gene Name:	cation channel sperm associated 1
Database Link:	Entrez Gene 117144 Human Q8NEC5



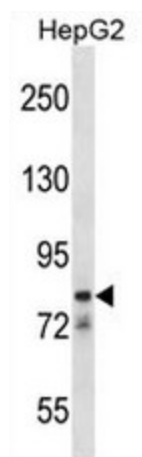
[View online »](#)

Background: Calcium ions play a primary role in the regulation of sperm motility. This gene belongs to a family of putative cation channels that are specific to spermatozoa and localize to the flagellum. The protein family features a single repeat with six membrane-spanning segments and a predicted calcium-selective pore region.

Synonyms: CATSPER; hCatSper; MGC33335; MGC33368

Protein Families: Druggable Genome, Ion Channels: Other, Transmembrane

Product images:



CATSPER1 Antibody (N-term) western blot analysis in HepG2 cell line lysates (35ug/lane). This demonstrates the CATSPER1 antibody detected the CATSPER1 protein (arrow).