

## Product datasheet for **AP50735PU-N**

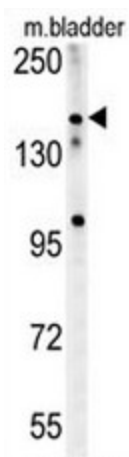
### **CASZ1 (C-term) Rabbit Polyclonal Antibody**

#### **Product data:**

Product Type:	Primary Antibodies
Applications:	WB
Recommended Dilution:	<b>ELISA:</b> 1/1000. <b>Western blot:</b> 1/100 - 1/500.
Reactivity:	Human, Mouse
Host:	Rabbit
Isotype:	Ig
Clonality:	Polyclonal
Immunogen:	KLH conjugated synthetic peptide between 1581-1609 amino acids from the C-terminal region of human CASZ1
Specificity:	This antibody reacts to CASZ1.
Formulation:	PBS State: Aff - Purified State: Liquid purified Ig fraction Preservative: 0.09% (W/V) sodium azide
Concentration:	lot specific
Purification:	Affinity chromatography on Protein A
Conjugation:	Unconjugated
Storage:	Store undiluted at 2-8°C for one month or (in aliquots) at -20°C for longer. Avoid repeated freezing and thawing.
Stability:	Shelf life: one year from despatch.
Predicted Protein Size:	190069 Da
Gene Name:	castor zinc finger 1
Database Link:	<a href="#">Entrez Gene 69743 Mouse</a> <a href="#">Entrez Gene 54897 Human</a> <a href="#">Q86V15</a>
Synonyms:	CST, SRG, ZNF693, Castor-related protein, Zinc finger protein 693



[View online »](#)

**Product images:**

CASZ1 Antibody (C-term) western blot analysis in mouse bladder tissue lysates (15ug/lane). This demonstrates the CASZ1 antibody detected CASZ1 protein (arrow).