

## Product datasheet for **AP50734PU-N**

### Caspase 5 (CASP5) (Center) Rabbit Polyclonal Antibody

#### Product data:

Product Type:	Primary Antibodies
Applications:	FC, IHC, WB
Recommended Dilution:	<b>ELISA:</b> 1/1000. <b>Western blot:</b> 1/100 - 1/500. <b>Immunohistochemistry on paraffin sections:</b> 1/50 - 1/100. <b>Flow Cytometry:</b> 1/10 - 1/50.
Reactivity:	Human
Host:	Rabbit
Isotype:	Ig
Clonality:	Polyclonal
Immunogen:	KLH conjugated synthetic peptide between 146-175 amino acids from the Central region of human CASP5
Specificity:	This antibody reacts to CASP5.
Formulation:	PBS State: Aff - Purified State: Liquid purified Ig fraction Preservative: 0.09% (W/V) sodium azide
Concentration:	lot specific
Purification:	Affinity chromatography on Protein A
Conjugation:	Unconjugated
Storage:	Store undiluted at 2-8°C for one month or (in aliquots) at -20°C for longer. Avoid repeated freezing and thawing.
Stability:	Shelf life: one year from despatch.
Predicted Protein Size:	49736 Da
Gene Name:	caspase 5
Database Link:	<a href="#">Entrez Gene 838 Human P51878</a>



[View online »](#)

**Background:**

This gene encodes a member of the cysteine-aspartic acid protease (caspase) family. Sequential activation of caspases plays a central role in the execution-phase of cell apoptosis. Caspases exist as inactive proenzymes which undergo proteolytic processing at conserved aspartic residues to produce two subunits, large and small, that dimerize to form the active enzyme. Overexpression of the active form of this enzyme induces apoptosis in fibroblasts. Max, a central component of the Myc/Max/Mad transcription regulation network important for cell growth, differentiation, and apoptosis, is cleaved by this protein; this process requires Fas-mediated dephosphorylation of Max. The expression of this gene is regulated by interferon-gamma and lipopolysaccharide. Alternatively spliced transcript variants have been identified for this gene.

**Synonyms:**

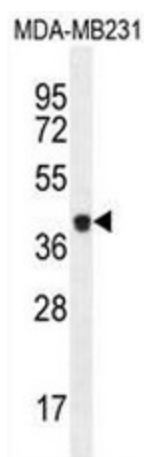
CASP-5, CASP5, ICH3, ICH-3 protease, TY protease, ICE(rel)-III

**Protein Families:**

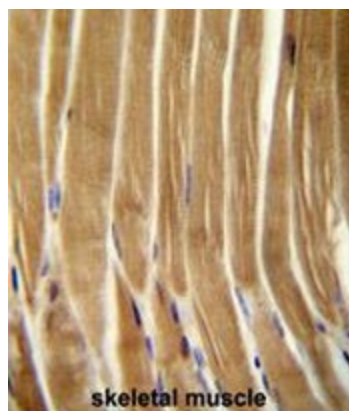
Druggable Genome, Protease

**Protein Pathways:**

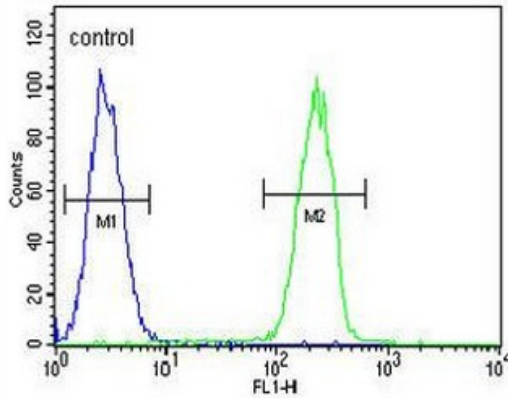
NOD-like receptor signaling pathway

**Product images:**

CASP5 Antibody (Center) western blot analysis in MDA-MB231 cell line lysates (35ug/lane). This demonstrates the CASP5 antibody detected the CASP5 protein (arrow).



CASP5 Antibody (Center) immunohistochemistry analysis in formalin fixed and paraffin embedded human skeletal muscle followed by peroxidase conjugation of the secondary antibody and DAB staining. This data demonstrates the use of the CASP5 Antibody (Center) for immunohistochemistry. Clinical relevance has not been evaluated.

**MDA-MB231**

CASP5 Antibody (Center) flow cytometric analysis of MDA-MB231 cells (right histogram) compared to a negative control cell (left histogram). FITC-conjugated goat-anti-rabbit secondary antibodies were used for the analysis.