

Product datasheet for **AP50731PU-N**

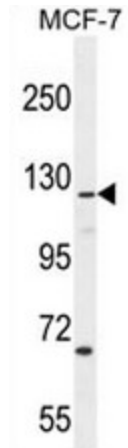
CASKIN2 (Center) Rabbit Polyclonal Antibody

Product data:

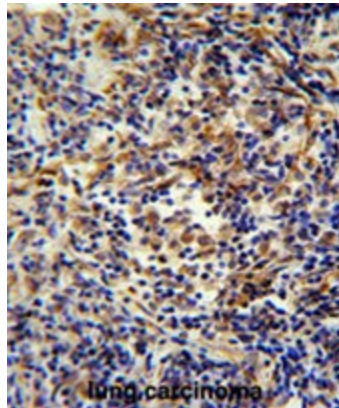
Product Type:	Primary Antibodies
Applications:	IHC, WB
Recommended Dilution:	ELISA: 1/1000. Western blot: 1/100 - 1/500. Immunohistochemistry on paraffin sections: 1/50 - 1/100.
Reactivity:	Human
Host:	Rabbit
Isotype:	Ig
Clonality:	Polyclonal
Immunogen:	KLH conjugated synthetic peptide between 714-741 amino acids from the Central region of human CASKIN2
Specificity:	This antibody reacts to CASKIN2.
Formulation:	PBS State: Aff - Purified State: Liquid purified Ig fraction Preservative: 0.09% (W/V) sodium azide
Concentration:	lot specific
Purification:	Affinity chromatography on Protein A
Conjugation:	Unconjugated
Storage:	Store undiluted at 2-8°C for one month or (in aliquots) at -20°C for longer. Avoid repeated freezing and thawing.
Stability:	Shelf life: one year from despatch.
Predicted Protein Size:	126783 Da
Gene Name:	CASK interacting protein 2
Database Link:	Entrez Gene 57513 Human Q8WXE0
Synonyms:	CASKIN2, KIAA1139



[View online »](#)

Product images:

CASKIN2 Antibody (Center) western blot analysis in MCF-7 cell line lysates (35ug/lane). This demonstrates the CASKIN2 antibody detected the CASKIN2 protein (arrow).



CASKIN2 antibody (Center) immunohistochemistry analysis in formalin fixed and paraffin embedded human lung carcinoma followed by peroxidase conjugation of the secondary antibody and DAB staining. This data demonstrates the use of the CASKIN2 antibody (Center) for immunohistochemistry. Clinical relevance has not been evaluated.