

## Product datasheet for **AP50730PU-N**

### CASC4 (C-term) Rabbit Polyclonal Antibody

#### Product data:

Product Type:	Primary Antibodies
Applications:	WB
Recommended Dilution:	<b>ELISA:</b> 1/1000. <b>Western blot:</b> 1/100 - 1/500.
Reactivity:	Human, Mouse
Host:	Rabbit
Isotype:	Ig
Clonality:	Polyclonal
Immunogen:	KLH conjugated synthetic peptide between 343-373 amino acids from the C-terminal region of human CASC4
Specificity:	This antibody reacts to CASC4.
Formulation:	PBS State: Aff - Purified State: Liquid purified Ig fraction Preservative: 0.09% (W/V) sodium azide
Concentration:	lot specific
Purification:	Affinity chromatography on Protein A
Conjugation:	Unconjugated
Storage:	Store undiluted at 2-8°C for one month or (in aliquots) at -20°C for longer. Avoid repeated freezing and thawing.
Stability:	Shelf life: one year from despatch.
Predicted Protein Size:	48864 Da
Gene Name:	cancer susceptibility candidate 4
Database Link:	<a href="#">Entrez Gene 319996 Mouse</a> <a href="#">Entrez Gene 113201 Human</a> <a href="#">Q6P4E1</a>



[View online »](#)

**Background:**

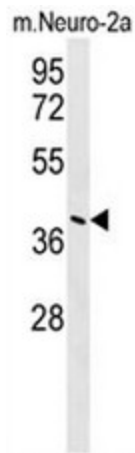
The increased expression level of this gene is associated with HER-2/neu proto-oncogene overexpression. Amplification and resulting overexpression of this proto-oncogene are found in approximately 30% of human breast and 20% of human ovarian cancers. Further characterization of the product of this gene may yield insight into the fundamental biology and pathogenetic effects of HER-2/neu overexpression in human breast and ovarian cancer cells. Alternatively spliced variants encoding different isoforms have been identified for this gene.

**Synonyms:**

DKFZp459F1927; H63; MGC74708

**Protein Families:**

Transmembrane

**Product images:**

CASC4 Antibody (C-term) western blot analysis in mouse Neuro-2a cell line lysates (35ug/lane). This demonstrates the CASC4 antibody detected the CASC4 protein (arrow).