

## Product datasheet for **AP50729PU-N**

### **CART (CARTPT) (N-term) Rabbit Polyclonal Antibody**

#### **Product data:**

Product Type:	Primary Antibodies
Applications:	IHC, WB
Recommended Dilution:	<b>ELISA:</b> 1/1000. <b>Western blot:</b> 1/1000. <b>Immunohistochemistry on Paraffin Sections:</b> 1/10-1/50.
Reactivity:	Human, Mouse
Host:	Rabbit
Isotype:	Ig
Clonality:	Polyclonal
Immunogen:	KLH conjugated synthetic peptide between 26-55 amino acids from the N-terminal region of Human CARTPT
Specificity:	This antibody recognizes Mouse CARTPT (N-term). Other species not tested.
Formulation:	PBS State: Aff - Purified State: Liquid purified Ig fraction Preservative: 0.09% (W/V) Sodium Azide
Concentration:	lot specific
Purification:	Affinity Chromatography on Protein A
Conjugation:	Unconjugated
Storage:	Store undiluted at 2-8°C for one month or (in aliquots) at -20°C for longer. Avoid repeated freezing and thawing.
Stability:	Shelf life: one year from despatch.
Predicted Protein Size:	12829 Da
Gene Name:	CART prepropeptide
Database Link:	<a href="#">Entrez Gene 9607 Human Q16568</a>



[View online »](#)

**Background:**

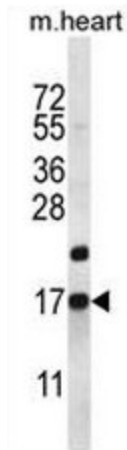
This gene encodes a secreted protein which is processed by prohormone/proprotein convertases to produce smaller, biologically active peptides. Expression of the transcript for this gene is regulated by certain drugs such as cocaine, and the encoded protein is thought to be involved in the regulation of appetite and stress. Mutations in this gene are associated with susceptibility to obesity.

**Synonyms:**

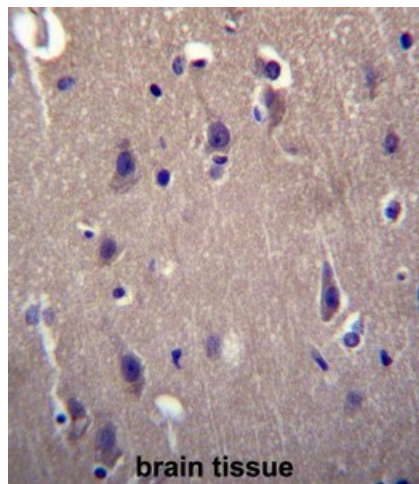
CARTPT

**Protein Families:**

Secreted Protein

**Product images:**


CARTPT Antibody (N-term) western blot analysis in mouse heart tissue lysates (35ug/lane). This demonstrates the CARTPT antibody detected the CARTPT protein (arrow).



CARTPT Antibody (N-term) immunohistochemistry analysis in formalin fixed and paraffin embedded human brain tissue followed by peroxidase conjugation of the secondary antibody and DAB staining. This data demonstrates the use of CARTPT Antibody (N-term) for immunohistochemistry. Clinical relevance has not been evaluated.