

## Product datasheet for **AP50722PU-N**

### Calpain 13 (CAPN13) (C-term) Rabbit Polyclonal Antibody

#### Product data:

Product Type:	Primary Antibodies
Applications:	WB
Recommended Dilution:	<b>ELISA:</b> 1/1000. <b>Western blot:</b> 1/100 - 1/500.
Reactivity:	Human
Host:	Rabbit
Isotype:	Ig
Clonality:	Polyclonal
Immunogen:	KLH conjugated synthetic peptide between 536-565 amino acids from the C-terminal region of human CAPN13
Specificity:	This antibody reacts to CAPN13.
Formulation:	PBS State: Aff - Purified State: Liquid purified Ig fraction Preservative: 0.09% (W/V) sodium azid
Concentration:	lot specific
Purification:	Affinity Chromatography on Protein A
Conjugation:	Unconjugated
Storage:	Store undiluted at 2-8°C for one month or (in aliquots) at -20°C for longer. Avoid repeated freezing and thawing.
Stability:	Shelf life: one year from despatch.
Predicted Protein Size:	76696 Da
Gene Name:	calpain 13
Database Link:	<a href="#">Entrez Gene 92291 Human Q6MZZZ</a>



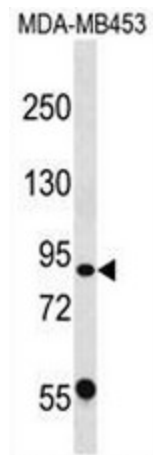
[View online »](#)

**Background:** Calpains are a family of cytosolic calcium-activated cysteine proteases involved in a variety of cellular processes including apoptosis, cell division, modulation of integrin-cytoskeletal interactions, and synaptic plasticity (Dear et al., 2000 [PubMed 10964513]). CAPN13 belongs to the calpain large subunit family.

**Synonyms:** CAPN13

**Protein Families:** Druggable Genome, Protease

**Product images:**



CAPN13 Antibody (C-term) western blot analysis in MDA-MB453 cell line lysates (35ug/lane). This demonstrates the CAPN13 antibody detected the CAPN13 protein (arrow).