

## Product datasheet for **AP50721PU-N**

### Actin Regulatory Protein CAPG (CAPG) (181-209) Rabbit Polyclonal Antibody

#### Product data:

Product Type:	Primary Antibodies
Applications:	WB
Recommended Dilution:	<b>ELISA:</b> 1/1000. <b>Western blot:</b> 1/100 - 1/500.
Reactivity:	Human
Host:	Rabbit
Isotype:	Ig
Clonality:	Polyclonal
Immunogen:	KLH conjugated synthetic peptide between 181-209 amino acids from the Central region of Human CAPG
Specificity:	This antibody recognizes CAPG.
Formulation:	PBS State: Aff - Purified State: Liquid purified Ig fraction Preservative: 0.09% (W/V) Sodium Azide
Concentration:	lot specific
Purification:	Protein Chromatography followed by peptide affinity purification
Conjugation:	Unconjugated
Storage:	Store undiluted at 2-8°C for one month or (in aliquots) at -20°C for longer. Avoid repeated freezing and thawing.
Stability:	Shelf life: one year from despatch.
Predicted Protein Size:	38499 Da
Gene Name:	capping actin protein, gelsolin like
Database Link:	<a href="#">Entrez Gene 822 Human</a> <a href="#">P40121</a>



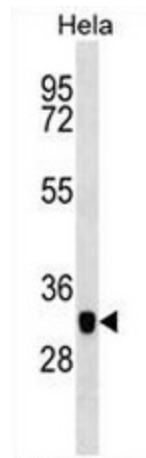
[View online »](#)

**Background:**

This gene encodes a member of the gelsolin/villin family of actin-regulatory proteins. The encoded protein reversibly blocks the barbed ends of F-actin filaments in a Ca<sup>2+</sup> and phosphoinositide-regulated manner, but does not sever preformed actin filaments. By capping the barbed ends of actin filaments, the encoded protein contributes to the control of actin-based motility in non-muscle cells. Alternatively spliced transcript variants have been observed, but have not been fully described. [provided by RefSeq].

**Synonyms:**

AFCP, MCP, CAP-G

**Product images:**

Western blot analysis in HeLa cell line lysates (35ug/lane) using CAPG Antibody. This demonstrates the CAPG antibody detected the CAPG protein (arrow).