

Product datasheet for **AP50720PU-N**

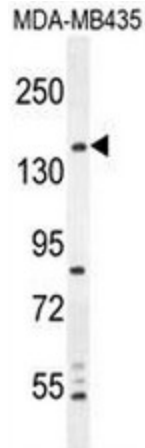
CAMSAP1 (N-term) Rabbit Polyclonal Antibody

Product data:

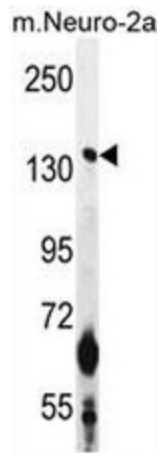
Product Type:	Primary Antibodies
Applications:	FC, IHC, WB
Recommended Dilution:	ELISA: 1/1000. Western blot: 1/100 - 1/500. Immunohistochemistry on paraffin sections: 1/10 - 1/50. Flow Cytometry: 1/10 - 1/50.
Reactivity:	Human, Mouse
Host:	Rabbit
Isotype:	Ig
Clonality:	Polyclonal
Immunogen:	KLH conjugated synthetic peptide between 41-70 amino acids from the N-terminal region of human CAMSAP1
Specificity:	This antibody reacts to CAMSAP1.
Formulation:	PBS State: Aff - Purified State: Liquid purified Ig fraction Preservative: 0.09% (W/V) sodium azide
Concentration:	lot specific
Purification:	Affinity Chromatography on Protein A
Conjugation:	Unconjugated
Storage:	Store undiluted at 2-8°C for one month or (in aliquots) at -20°C for longer. Avoid repeated freezing and thawing.
Stability:	Shelf life: one year from despatch.
Predicted Protein Size:	177972 Da
Gene Name:	calmodulin regulated spectrin associated protein 1
Database Link:	Entrez Gene 157922 Human Q5T5Y3
Synonyms:	bA100C15.1; DKFZp434F195; DKFZp434G2311; FLJ31228; MGC163452; PRO2405



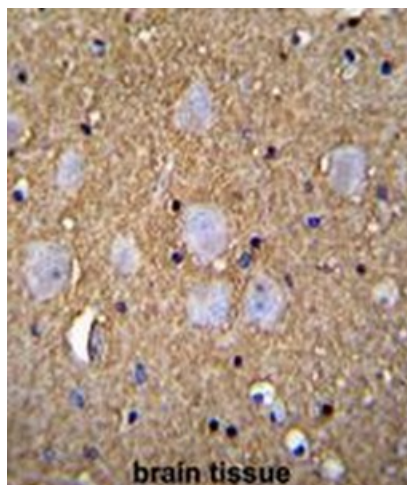
[View online »](#)

Product images:

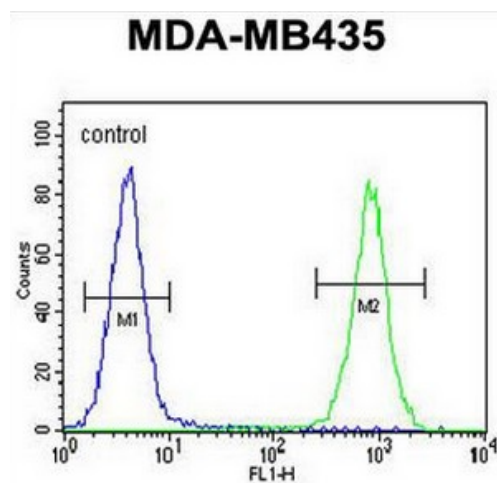
CAMSAP1 Antibody (N-term) western blot analysis in MDA-MB435 cell line lysates (35ug/lane). This demonstrates the CAMSAP1 antibody detected the CAMSAP1 protein (arrow).



CAMSAP1 Antibody (N-term) western blot analysis in mouse Neuro-2a cell line lysates (35ug/lane). This demonstrates the CAMSAP1 antibody detected the CAMSAP1 protein (arrow).



CAMSAP1 Antibody (N-term) immunohistochemistry analysis in formalin fixed and paraffin embedded human brain tissue followed by peroxidase conjugation of the secondary antibody and DAB staining. This data demonstrates the use of CAMSAP1 Antibody (N-term) for immunohistochemistry. Clinical relevance has not been evaluated.



CAMSAP1 Antibody (N-term) flow cytometric analysis of MDA-MB435 cells (right histogram) compared to a negative control cell (left histogram). FITC-conjugated goat-anti-rabbit secondary antibodies were used for the analysis.