

## Product datasheet for **AP50718PU-N**

### **CAMK2N1 (C-term) Rabbit Polyclonal Antibody**

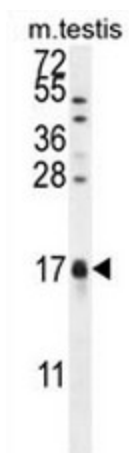
#### **Product data:**

Product Type:	Primary Antibodies
Applications:	WB
Recommended Dilution:	<b>ELISA:</b> 1/1000. <b>Western blot:</b> 1/100 - 1/500.
Reactivity:	Human, Mouse
Host:	Rabbit
Isotype:	Ig
Clonality:	Polyclonal
Immunogen:	KLH conjugated synthetic peptide between 44-73 amino acids from the C-terminal region of human CAMK2N1
Specificity:	This antibody reacts to CAMK2N1.
Formulation:	PBS State: Aff - Purified State: Liquid purified Ig fraction Preservative: 0.09% (W/V) sodium azide
Concentration:	lot specific
Purification:	Affinity Chromatography on Protein A
Conjugation:	Unconjugated
Storage:	Store undiluted at 2-8°C for one month or (in aliquots) at -20°C for longer. Avoid repeated freezing and thawing.
Stability:	Shelf life: one year from despatch.
Predicted Protein Size:	8553 Da
Gene Name:	calcium/calmodulin dependent protein kinase II inhibitor 1
Database Link:	<a href="#">Entrez Gene 55450 Human</a> <a href="#">Q7Z7J9</a>
Synonyms:	CaMKIINalpha; MGC22256; PRO1489; RP11-401M16.1
Protein Families:	Druggable Genome



[View online »](#)

## Product images:



CAMK2N1 Antibody (C-term) western blot analysis in mouse testis tissue lysates (35ug/lane). This demonstrates the CaMK2N1 antibody detected the CaMK2N1 protein (arrow).