

Product datasheet for **AP50717PU-N**

Calumenin (CALU) (C-term) Rabbit Polyclonal Antibody

Product data:

Product Type:	Primary Antibodies
Applications:	IHC, WB
Recommended Dilution:	ELISA: 1/1000. Western blot: 1/100 - 1/500. Immunohistochemistry on paraffin sections: 1/10 - 1/50.
Reactivity:	Human
Host:	Rabbit
Isotype:	Ig
Clonality:	Polyclonal
Immunogen:	KLH conjugated synthetic peptide between 216-246 amino acids from the C-terminal region of human CALU
Specificity:	This antibody reacts to CALU.
Formulation:	PBS State: Aff - Purified State: Liquid purified Ig fraction Preservative: 0.09% (W/V) sodium azide
Concentration:	lot specific
Purification:	Affinity Chromatography on Protein A
Conjugation:	Unconjugated
Storage:	Store undiluted at 2-8°C for one month or (in aliquots) at -20°C for longer. Avoid repeated freezing and thawing.
Stability:	Shelf life: one year from despatch.
Predicted Protein Size:	37107 Da
Gene Name:	calumenin
Database Link:	Entrez Gene 813 Human O43852



[View online »](#)

Background:

The product of this gene is a calcium-binding protein localized in the endoplasmic reticulum (ER) and it is involved in such ER functions as protein folding and sorting. This protein belongs to a family of multiple EF-hand proteins (CERC) that include reticulocalbin, ERC-55, and Cab45 and the product of this gene. Alternatively spliced transcript variants encoding different isoforms have been identified.

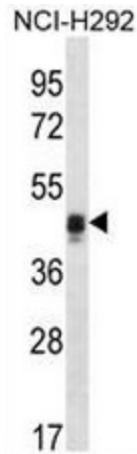
Synonyms:

Crocalbin, IEF SSP 9302

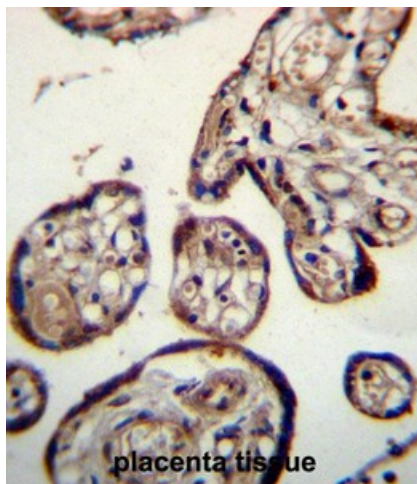
Protein Families:

Secreted Protein

Product images:



CALU Antibody (C-term) western blot analysis in NCI-H292 cell line lysates (35ug/lane). This demonstrates the CALU antibody detected the CALU protein (arrow).



CALU Antibody (C-term) immunohistochemistry analysis in formalin fixed and paraffin embedded human placenta tissue followed by peroxidase conjugation of the secondary antibody and DAB staining. This data demonstrates the use of CALU Antibody (C-term) for immunohistochemistry. Clinical relevance has not been evaluated.