

## Product datasheet for **AP50714PU-N**

### Calcitonin (CALCA) (C-term) Rabbit Polyclonal Antibody

#### Product data:

Product Type:	Primary Antibodies
Applications:	WB
Recommended Dilution:	<b>ELISA:</b> 1/1000. <b>Western blot:</b> 1/100 - 1/500.
Reactivity:	Human
Host:	Rabbit
Isotype:	Ig
Clonality:	Polyclonal
Immunogen:	KLH conjugated synthetic peptide between 103-132 amino acids from the C-terminal region of human CALCA/CT
Specificity:	This antibody reacts to CALCA/CT.
Formulation:	PBS State: Aff - Purified State: Liquid purified Ig fraction Preservative: 0.09% (W/V) sodium azide
Concentration:	lot specific
Purification:	Affinity Chromatography on Protein A
Conjugation:	Unconjugated
Storage:	Store undiluted at 2-8°C for one month or (in aliquots) at -20°C for longer. Avoid repeated freezing and thawing.
Stability:	Shelf life: one year from despatch.
Predicted Protein Size:	15467 Da
Gene Name:	calcitonin related polypeptide alpha
Database Link:	<a href="#">Entrez Gene 796 Human P06881</a>



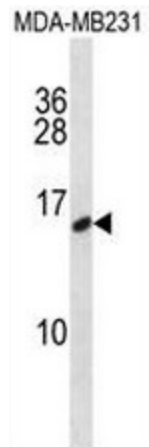
[View online »](#)

**Background:** This gene encodes the peptide hormones calcitonin, calcitonin gene-related peptide and katalcalcin by tissue-specific alternative RNA splicing of the gene transcripts and cleavage of inactive precursor proteins. Calcitonin is involved in calcium regulation and acts to regulate phosphorus metabolism. Calcitonin gene-related peptide functions as a vasodilator while katalcalcin is a calcium-lowering peptide. Multiple transcript variants encoding different isoforms have been found for this gene.

**Synonyms:** CALCA, CALC1

**Protein Families:** Druggable Genome, Secreted Protein

**Product images:**



CALCA/CT Antibody (C-term) western blot analysis in MDA-MB231 cell line lysates (35ug/lane). This demonstrates the CALCA/CT antibody detected the CALCA/CT protein (arrow).