

Product datasheet for **AP50713PU-N**

Calcitonin (CALCA) (Center) Rabbit Polyclonal Antibody

Product data:

Product Type:	Primary Antibodies
Applications:	IHC, WB
Recommended Dilution:	ELISA: 1/1000. Western blot: 1/100 - 1/500. Immunohistochemistry on paraffin sections: 1/50 - 1/100.
Reactivity:	Human
Host:	Rabbit
Isotype:	Ig
Clonality:	Polyclonal
Immunogen:	KLH conjugated synthetic peptide between 63-91 amino acids from the Central region of human CALCA
Specificity:	This antibody reacts to CALCA.
Formulation:	PBS State: Aff - Purified State: Liquid purified Ig fraction Preservative: 0.09% (W/V) sodium azide
Concentration:	lot specific
Purification:	Affinity chromatography on Protein A
Conjugation:	Unconjugated
Storage:	Store undiluted at 2-8°C for one month or (in aliquots) at -20°C for longer. Avoid repeated freezing and thawing.
Stability:	Shelf life: one year from despatch.
Predicted Protein Size:	13898 Da
Gene Name:	calcitonin related polypeptide alpha
Database Link:	Entrez Gene 796 Human P06881



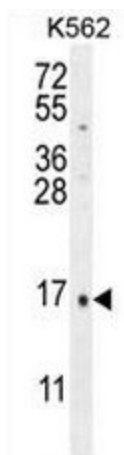
[View online »](#)

Background: This gene encodes the peptide hormones calcitonin, calcitonin gene-related peptide and katalcalcin by tissue-specific alternative RNA splicing of the gene transcripts and cleavage of inactive precursor proteins. Calcitonin is involved in calcium regulation and acts to regulate phosphorus metabolism. Calcitonin gene-related peptide functions as a vasodilator while katalcalcin is a calcium-lowering peptide. Multiple transcript variants encoding different isoforms have been found for this gene.

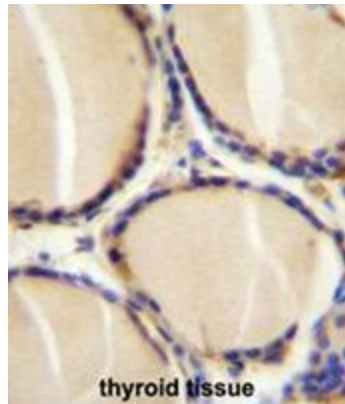
Synonyms: Calcitonin gene-related peptide I, Alpha-type CGRP, CALC1, CGRP-I

Protein Families: Druggable Genome, Secreted Protein

Product images:



CALCA Antibody (Center) western blot analysis in K562 cell line lysates (35ug/lane). This demonstrates the CALCA antibody detected the CALCA protein (arrow).



CALCA Antibody (Center) immunohistochemistry analysis in formalin fixed and paraffin embedded human thyroid tissue followed by peroxidase conjugation of the secondary antibody and DAB staining. This data demonstrates the use of CALCA Antibody (Center) for immunohistochemistry. Clinical relevance has not been evaluated.