

Product datasheet for **AP50711PU-N**

SynCAM (CADM1) (N-term) Rabbit Polyclonal Antibody

Product data:

Product Type:	Primary Antibodies
Applications:	IHC, WB
Recommended Dilution:	Peptide ELISA: 1/1000. Western blot: 1/1000. Immunohistochemistry on Paraffin Sections: 1/50 - 1/100.
Reactivity:	Human, Mouse
Host:	Rabbit
Isotype:	Ig
Clonality:	Polyclonal
Immunogen:	KLH conjugated synthetic peptide between 66-94 amino acids from the N-terminal region of human CADM1
Specificity:	This antibody reacts to CADM1.
Formulation:	PBS State: Aff - Purified State: Liquid purified Ig fraction Preservative: 0.09% (W/V) sodium azide
Concentration:	lot specific
Purification:	Affinity chromatography on Protein A
Conjugation:	Unconjugated
Storage:	Store undiluted at 2-8°C for one month or (in aliquots) at -20°C for longer. Avoid repeated freezing and thawing.
Stability:	Shelf life: one year from despatch.
Predicted Protein Size:	48509 Da
Gene Name:	cell adhesion molecule 1
Database Link:	Entrez Gene 54725 Mouse Entrez Gene 23705 Human Q9BY67



[View online »](#)

Background:

Mediates homophilic cell-cell adhesion in a Ca²⁺-independent manner. Also mediates heterophilic cell-cell adhesion with CADM3 and PVRL3 in a Ca²⁺-independent manner. Acts as a tumor suppressor in non-small-cell lung cancer (NSCLC) cells. Interaction with CRTAM promotes natural killer (NK) cell cytotoxicity and interferon-gamma (IFN-gamma) secretion by CD8⁺ cells in vitro as well as NK cell-mediated rejection of tumors expressing CADM3 in vivo. May contribute to the less invasive phenotypes of lepidic growth tumor cells. In mast cells, may mediate attachment to and promote communication with nerves. CADM1, together with MITF, is essential for development and survival of mast cells in vivo. May act as a synaptic cell adhesion molecule that drives synapse assembly. May be involved in neuronal migration, axon growth, pathfinding, and fasciculation on the axons of differentiating neurons. May play diverse roles in the spermatogenesis including in the adhesion of spermatocytes and spermatids to Sertoli cells and for their normal differentiation into mature spermatozoa.

Synonyms:

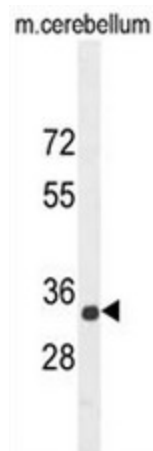
IGSF4, IGSF4A, NECL2, TSLC1, NECL-2, SgIgSF, TSLC-1

Protein Families:

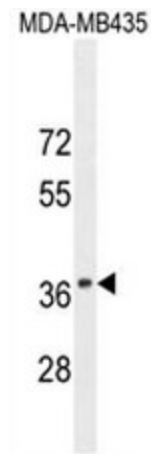
Transmembrane

Protein Pathways:

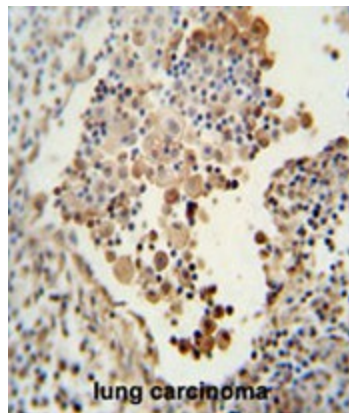
Cell adhesion molecules (CAMs)

Product images:

CADM1 Antibody (N-term) western blot analysis in mouse cerebellum tissue lysates (35ug/lane). This demonstrates the CADM1 antibody detected the CADM1 protein (arrow).



CADM1 Antibody (N-term) western blot analysis in MDA-MB435 cell line lysates (35ug/lane). This demonstrates the CADM1 antibody detected the CADM1 protein (arrow).



CADM1 antibody (N-term) immunohistochemistry analysis in formalin fixed and paraffin embedded human lung carcinoma followed by peroxidase conjugation of the secondary antibody and DAB staining. This data demonstrates the use of the CADM1 antibody (N-term) for immunohistochemistry. Clinical relevance has not been evaluated.