

Product datasheet for **AP50705PU-N**

CACNB2 (Center) Rabbit Polyclonal Antibody

Product data:

Product Type:	Primary Antibodies
Applications:	WB
Recommended Dilution:	ELISA: 1/1000. Western blot: 1/100 - 1/500.
Reactivity:	Human
Host:	Rabbit
Isotype:	Ig
Clonality:	Polyclonal
Immunogen:	KLH conjugated synthetic peptide between 231-261 amino acids from the Central region of human CACNB2.
Specificity:	This antibody reacts to CACNB2.
Formulation:	PBS State: Aff - Purified State: Liquid purified Ig fraction Preservative: 0.09% (W/V) sodium azide
Concentration:	lot specific
Purification:	Affinity chromatography on Protein A
Conjugation:	Unconjugated
Storage:	Store the antibody undiluted at 2-8°C for one month or (in aliquots) at -20°C for longer. Avoid repeated freezing and thawing.
Stability:	Shelf life: one year from despatch.
Predicted Protein Size:	73581 Da
Gene Name:	calcium voltage-gated channel auxiliary subunit beta 2
Database Link:	Entrez Gene 783 Human Q08289



[View online »](#)

Background:

This gene encodes a subunit of a voltage-dependent calcium channel protein which is a member of the voltage-gated calcium channel superfamily. The gene product was originally identified as an antigen target in Lambert-Eaton myasthenic syndrome which is an autoimmune disorder. Mutations in this gene are associated with Brugada syndrome. Alternatively spliced variants have been identified for this gene.

Synonyms:

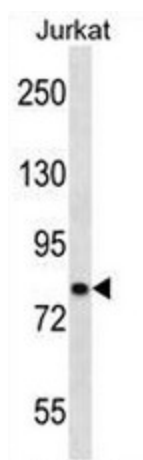
CAB2, CACNLB2, MYSB

Protein Families:

Druggable Genome, Ion Channels: Other

Protein Pathways:

Arrhythmogenic right ventricular cardiomyopathy (ARVC), Cardiac muscle contraction, Dilated cardiomyopathy, Hypertrophic cardiomyopathy (HCM), MAPK signaling pathway

Product images:

CACNB2 Antibody (Center) western blot analysis in Jurkat cell line lysates (35ug/lane). This demonstrates the CACNB2 antibody detected the CACNB2 protein (arrow).