

Product datasheet for **AP50704PU-N**

CACNB1 (C-term) Rabbit Polyclonal Antibody

Product data:

Product Type:	Primary Antibodies
Applications:	WB
Recommended Dilution:	ELISA: 1/1000. Western blot: 1/100 - 1/500.
Reactivity:	Human
Host:	Rabbit
Isotype:	Ig
Clonality:	Polyclonal
Immunogen:	KLH conjugated synthetic peptide between 542-572 amino acids from the C-terminal region of human CACNB1
Specificity:	This antibody reacts to CACNB1.
Formulation:	PBS State: Aff - Purified State: Liquid purified Ig fraction Preservative: 0.09% (W/V) sodium azide
Concentration:	lot specific
Purification:	Affinity chromatography on Protein A
Conjugation:	Unconjugated
Storage:	Store the antibody undiluted at 2-8°C for one month or (in aliquots) at -20°C for longer. Avoid repeated freezing and thawing.
Stability:	Shelf life: one year from despatch.
Predicted Protein Size:	65714 Da
Gene Name:	calcium voltage-gated channel auxiliary subunit beta 1
Database Link:	Entrez Gene 782 Human Q02641



[View online »](#)

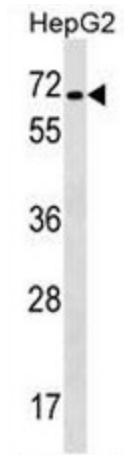
Background: The protein encoded by this gene belongs to the calcium channel beta subunit family. It plays an important role in the calcium channel by modulating G protein inhibition, increasing peak calcium current, controlling the alpha-1 subunit membrane targeting and shifting the voltage dependence of activation and inactivation. Alternative splicing occurs at this locus and three transcript variants encoding three distinct isoforms have been identified.

Synonyms: CAB1, CACNLB1

Protein Families: Druggable Genome, Ion Channels: Other

Protein Pathways: Arrhythmogenic right ventricular cardiomyopathy (ARVC), Cardiac muscle contraction, Dilated cardiomyopathy, Hypertrophic cardiomyopathy (HCM), MAPK signaling pathway

Product images:



CACNB1 Antibody (C-term) western blot analysis in HepG2 cell line lysates (35ug/lane). This demonstrates the CACNB1 antibody detected the CACNB1 protein (arrow).