

Product datasheet for **AP50699PU-N**

CA6 (C-term) Rabbit Polyclonal Antibody

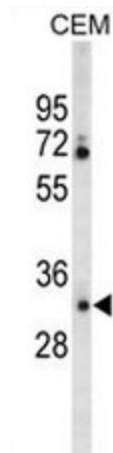
Product data:

Product Type:	Primary Antibodies
Applications:	FC, IHC, WB
Recommended Dilution:	Western blot: 1/1000. Immunohistochemistry on paraffin sections 1/50 - 1/100. Flow cytometric: 1/10 - 1/50.
Reactivity:	Human
Host:	Rabbit
Isotype:	Ig
Clonality:	Polyclonal
Immunogen:	KLH conjugated synthetic peptide between 279~308 amino acids from the C-terminal region of human CA6
Specificity:	This antibody reacts to CA6.
Formulation:	PBS State: Aff - Purified State: Liquid purified Ig fraction Preservative: 0.09% (W/V) sodium azide
Concentration:	lot specific
Purification:	Affinity chromatography on Protein A
Conjugation:	Unconjugated
Storage:	Store the antibody undiluted at 2-8°C for one month or (in aliquots) at -20°C for longer. Avoid repeated freezing and thawing.
Stability:	Shelf life: one year from despatch.
Predicted Protein Size:	35367 Da
Gene Name:	carbonic anhydrase 6
Database Link:	Entrez Gene 765 Human P23280

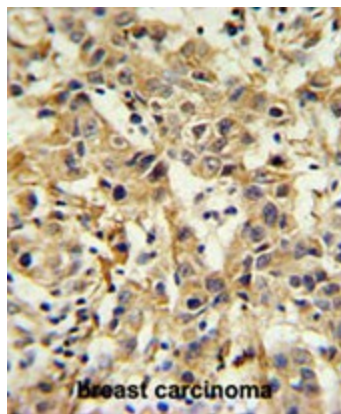


[View online »](#)

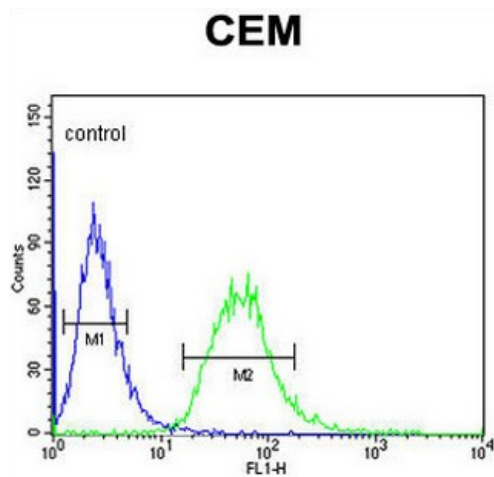
Background:	The protein encoded by this gene is one of several isozymes of carbonic anhydrase. This protein is found only in salivary glands and saliva and protein may play a role in the reversible hydration of carbon dioxide though its function in saliva is unknown.
Synonyms:	Carbonic anhydrase VI, Carbonate dehydratase VI, Secreted carbonic anhydrase, Salivary carbonic anhydrase, CA6, CA-VI
Protein Families:	Druggable Genome, Secreted Protein
Protein Pathways:	Nitrogen metabolism

Product images:

Western blot analysis of CA6 Antibody (C-term) in CEM cell line lysates (35ug/lane). CA6 (arrow) was detected using the purified Pab.



CA6 Antibody (C-term) IHC analysis in formalin fixed and paraffin embedded breast carcinoma followed by peroxidase conjugation of the secondary antibody and DAB staining. This data demonstrates the use of the CA6 Antibody (C-term) for immunohistochemistry. Clinical relevance has not been evaluated.



CA6 Antibody (C-term) flow cytometric analysis of CEM cells (right histogram) compared to a negative control cell (left histogram). FITC-conjugated goat-anti-rabbit secondary antibodies were used for the analysis.