

## Product datasheet for **AP50694PU-N**

### **C1orf115 (Center) Rabbit Polyclonal Antibody**

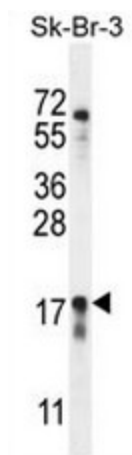
#### **Product data:**

Product Type:	Primary Antibodies
Applications:	WB
Recommended Dilution:	<b>ELISA:</b> 1/1000. <b>Western blot:</b> 1/100 - 1/500.
Reactivity:	Human
Host:	Rabbit
Isotype:	Ig
Clonality:	Polyclonal
Immunogen:	KLH conjugated synthetic peptide between 83-112 amino acids from the Central region of human CA115
Specificity:	This antibody reacts to CA115.
Formulation:	PBS State: Aff - Purified State: Liquid purified Ig fraction Preservative: 0.09% (W/V) sodium azide
Concentration:	lot specific
Purification:	Affinity chromatography on Protein A
Conjugation:	Unconjugated
Storage:	Store the antibody undiluted at 2-8°C for one month or (in aliquots) at -20°C for longer. Avoid repeated freezing and thawing.
Stability:	Shelf life: one year from despatch.
Predicted Protein Size:	15517 Da
Gene Name:	chromosome 1 open reading frame 115
Database Link:	<a href="#">Entrez Gene 79762 Human</a> <a href="#">Q9H7X2</a>
Synonyms:	C1orf115, Uncharacterized protein C1orf115
Protein Families:	Transmembrane



[View online »](#)

## Product images:



CA115 Antibody (Center) western blot analysis in SK-BR-3 cell line lysates (35ug/lane). This demonstrates the CA115 antibody detected the CA115 protein (arrow).