

Product datasheet for **AP50691PU-N**

SWT1 (N-term) Rabbit Polyclonal Antibody

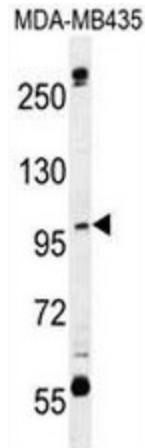
Product data:

Product Type:	Primary Antibodies
Applications:	FC, WB
Recommended Dilution:	ELISA: 1/1000. Western blot: 1/100 - 1/500. Flow Cytometry: 1/10 - 1/50.
Reactivity:	Human
Host:	Rabbit
Isotype:	Ig
Clonality:	Polyclonal
Immunogen:	KLH conjugated synthetic peptide between 286-314 amino acids from the N-terminal region of human CA026
Specificity:	This antibody reacts to CA026.
Formulation:	PBS State: Aff - Purified State: Liquid purified Ig fraction Preservative: 0.09% (W/V) sodium azide
Concentration:	lot specific
Purification:	Affinity chromatography on Protein A
Conjugation:	Unconjugated
Storage:	Store the antibody undiluted at 2-8°C for one month or (in aliquots) at -20°C for longer. Avoid repeated freezing and thawing.
Stability:	Shelf life: one year from despatch.
Predicted Protein Size:	103222 Da
Gene Name:	SWT1, RNA endoribonuclease homolog
Database Link:	Entrez Gene 54823 Human Q5T5J6
Synonyms:	Uncharacterized protein C1orf26,C1orf26

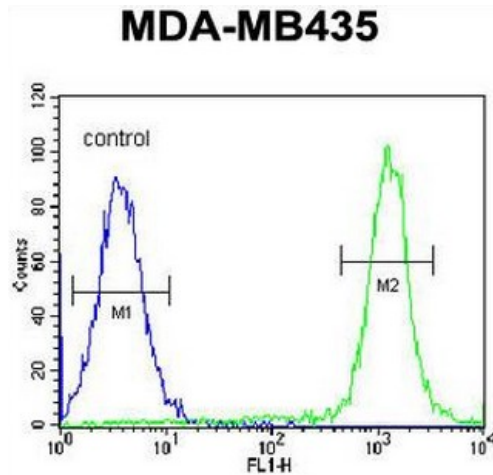


[View online »](#)

Product images:



CA026 Antibody (N-term) western blot analysis in MDA-MB435 cell line lysates (35ug/lane). This demonstrates the CA026 antibody detected the CA026 protein (arrow).



CA026 Antibody (N-term) flow cytometric analysis of MDA-MB435 cells (right histogram) compared to a negative control cell (left histogram). FITC-conjugated goat-anti-rabbit secondary antibodies were used for the analysis.