

## Product datasheet for **AP50688PU-N**

### **C9orf72 (C-term) Rabbit Polyclonal Antibody**

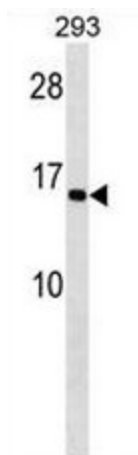
#### Product data:

Product Type:	Primary Antibodies
Applications:	WB
Recommended Dilution:	<b>ELISA:</b> 1/1000. <b>Western blot:</b> 1/100 - 1/500.
Reactivity:	Human
Host:	Rabbit
Isotype:	Ig
Clonality:	Polyclonal
Immunogen:	KLH conjugated synthetic peptide between 113-142 amino acids from the C-terminal region of human C9orf46
Specificity:	This antibody reacts to C9orf46.
Formulation:	PBS State: Aff - Purified State: Liquid purified Ig fraction Preservative: 0.09% (W/V) sodium azide
Concentration:	lot specific
Purification:	Affinity chromatography on Protein A
Conjugation:	Unconjugated
Storage:	Store the antibody undiluted at 2-8°C for one month or (in aliquots) at -20°C for longer. Avoid repeated freezing and thawing.
Stability:	Shelf life: one year from despatch.
Predicted Protein Size:	54328 Da
Gene Name:	chromosome 9 open reading frame 72
Database Link:	<a href="#">Entrez Gene 203228 Human</a> <a href="#">Q96LT7</a>
Synonyms:	MGC23980; OTTHUMP00000021172; RP11-27J8.2



[View online »](#)

## Product images:



C9orf46 Antibody (C-term) western blot analysis in 293 cell line lysates (35ug/lane). This demonstrates the C9orf46 antibody detected the C9orf46 protein (arrow).