

Product datasheet for **AP50677PU-N**

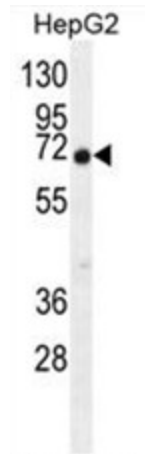
C11orf95 (C-term) Rabbit Polyclonal Antibody

Product data:

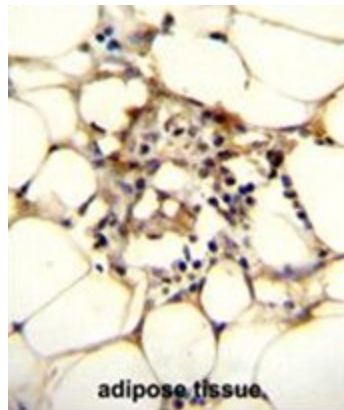
Product Type:	Primary Antibodies
Applications:	IF, IHC, WB
Recommended Dilution:	ELISA: 1/1000. Western blotting: 1/100 - 1/500. Immunohistochemistry on paraffin sections: 1/50 - 1/100. Immunofluorescence: 1/10 - 1/50.
Reactivity:	Human
Host:	Rabbit
Isotype:	Ig
Clonality:	Polyclonal
Immunogen:	KLH conjugated synthetic peptide between 563-592 amino acids from the C-terminal region of human C9JLR9
Specificity:	This antibody reacts to C9JLR9.
Formulation:	PBS containing 0.09% (W/V) sodium azide as preservative State: Aff - Purified State: Liquid purified Ig fraction
Concentration:	lot specific
Purification:	Affinity chromatography on Protein A
Conjugation:	Unconjugated
Storage:	Store the antibody undiluted at 2-8°C for one month or (in aliquots) at -20°C for longer. Avoid repeated freezing and thawing.
Stability:	Shelf life: one year from despatch.
Gene Name:	chromosome 11 open reading frame 95
Database Link:	Entrez Gene 65998 Human C9JLR9
Synonyms:	Uncharacterized protein C11orf95,C11orf95
Note:	Molecular Weight: 73197 Da



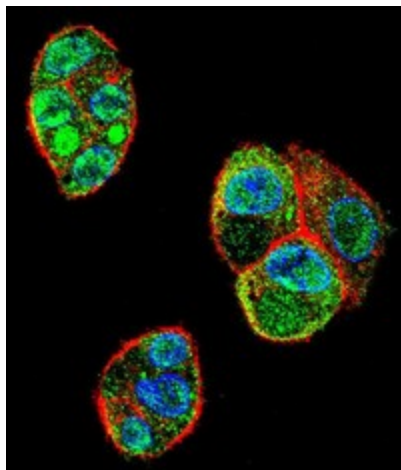
[View online »](#)

Product images:

C9JLR9 Antibody (C-term) western blot analysis in HepG2 cell line lysates (35ug/lane). This demonstrates the C9JLR9 antibody detected the C9JLR9 protein (arrow).



C9JLR9 Antibody (C-term) immunohistochemistry analysis in formalin fixed and paraffin embedded human adipose tissue followed by peroxidase conjugation of the secondary antibody and DAB staining. This data demonstrates the use of C9JLR9 Antibody (C-term) for immunohistochemistry. Clinical relevance has not been evaluated.



Confocal immunofluorescent analysis of C9JLR9 Antibody (C-term) with HepG2 cell followed by Alexa Fluor 488-conjugated goat anti-rabbit IgG (green). Actin filaments have been labeled with Alexa Fluor 555 phalloidin (red). DAPI was used to stain the cell nuclear (blue).