

Product datasheet for **AP50672PU-N**

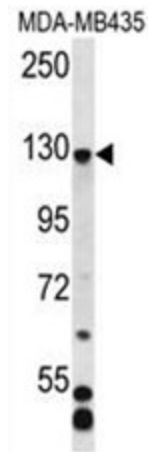
C7orf63 (CFAP69) (N-term) Rabbit Polyclonal Antibody

Product data:

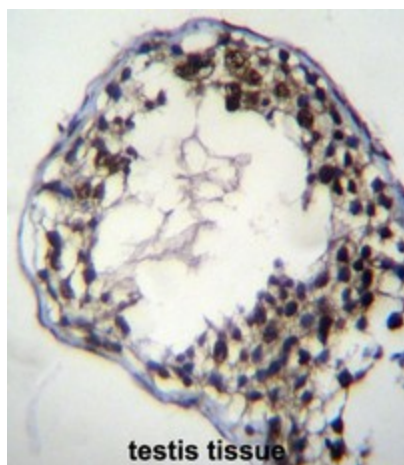
Product Type:	Primary Antibodies
Applications:	IHC, WB
Recommended Dilution:	ELISA: 1/1000. Western blotting: 1/100 - 1/500. Immunohistochemistry on paraffin sections: 1/10 - 1/50.
Reactivity:	Human
Host:	Rabbit
Isotype:	Ig
Clonality:	Polyclonal
Immunogen:	KLH conjugated synthetic peptide between 149-178 amino acids from the N-terminal region of human C7orf63.
Specificity:	This antibody reacts to C7orf63.
Formulation:	PBS containing 0.09% (W/V) sodium azide as preservative State: Aff - Purified State: Liquid purified Ig fraction
Concentration:	lot specific
Purification:	Affinity chromatography on Protein A
Conjugation:	Unconjugated
Storage:	Store the antibody undiluted at 2-8°C for one month or (in aliquots) at -20°C for longer. Avoid repeated freezing and thawing.
Stability:	Shelf life: one year from despatch.
Gene Name:	cilia and flagella associated protein 69
Database Link:	Entrez Gene 79846 Human A5D8W1
Synonyms:	Uncharacterized protein
Note:	Molecular Weight: 105883 Da



[View online »](#)

Product images:

C7orf63 Antibody (N-term) western blot analysis in MDA-MB435 cell line lysates (35ug/lane). This demonstrates the C7orf63 antibody detected the C7orf63 protein (arrow).



C7orf63 Antibody (N-term) immunohistochemistry analysis in formalin fixed and paraffin embedded human testis tissue followed by peroxidase conjugation of the secondary antibody and DAB staining. This data demonstrates the use of C7orf63 Antibody (N-term) for immunohistochemistry. Clinical relevance has not been evaluated.