

## Product datasheet for **AP50662PU-N**

### Complement C7 (C7) (Center) Rabbit Polyclonal Antibody

#### Product data:

Product Type:	Primary Antibodies
Applications:	FC, IHC, WB
Recommended Dilution:	<b>Western blot:</b> 1/1000. <b>Immunohistochemistry on paraffin sections:</b> 1/50 - 1/100. <b>Flow cytometry:</b> 1/10 - 1/50.
Reactivity:	Human
Host:	Rabbit
Isotype:	Ig
Clonality:	Polyclonal
Immunogen:	KLH conjugated synthetic peptide between 375-403 amino acids from the Center region of human C7
Specificity:	This antibody reacts to Complement C7.
Formulation:	PBS containing 0.09% (W/V) sodium azide as preservative State: Aff - Purified State: Liquid purified Ig fraction
Concentration:	lot specific
Purification:	Affinity chromatography on Protein A
Conjugation:	Unconjugated
Storage:	Store the antibody undiluted at 2-8°C for one month or (in aliquots) at -20°C for longer. Avoid repeated freezing and thawing.
Stability:	Shelf life: one year from despatch.
Gene Name:	complement component 7
Database Link:	<a href="#">Entrez Gene 730 Human P10643</a>
Background:	C7 is a component of the complement system. It participates in the formation of Membrane Attack Complex (MAC). People with C7 deficiency are prone to bacterial infection.
Synonyms:	Complement component C7, Complement 7



[View online »](#)

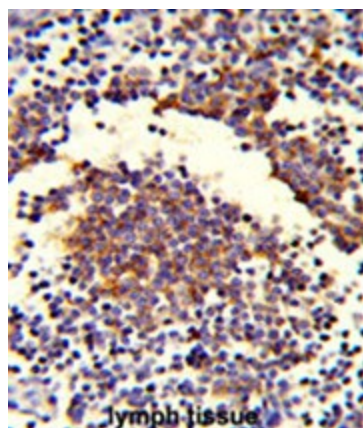
**Note:** **Molecular Weight:** 93518 Da

**Protein Families:** Druggable Genome, Secreted Protein

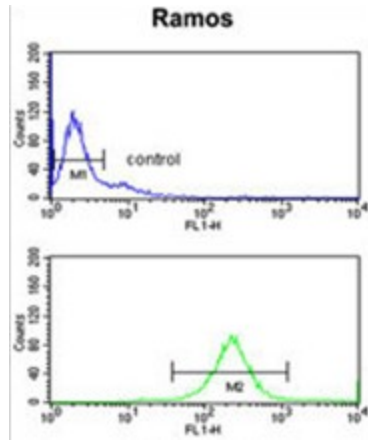
**Protein Pathways:** Complement and coagulation cascades, Prion diseases, Systemic lupus erythematosus

**Product images:**

Western blot analysis of C7 Antibody (Center) in Ramos cell line lysates (35ug/lane). C7 (arrow) was detected using the purified Pab.



Formalin-fixed and paraffin-embedded human lymph tissue reacted with C7 Antibody (Center), which was peroxidase-conjugated to the secondary antibody, followed by DAB staining. This data demonstrates the use of this antibody for immunohistochemistry; clinical relevance has not been evaluated.



C7 Antibody (Center) ( #AP9262c) flow cytometry analysis of Ramos cells (bottom histogram) compared to a negative control cell (top histogram).FITC-conjugated goat-anti-rabbit secondary antibodies were used for the analysis.