

## Product datasheet for **AP50661PU-N**

### **C6orf70 (ERMARD) (Center) Rabbit Polyclonal Antibody**

#### **Product data:**

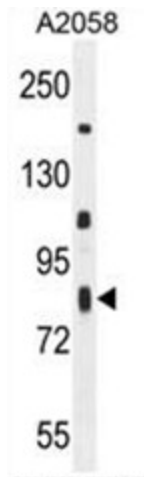
Product Type:	Primary Antibodies
Applications:	FC, IHC, WB
Recommended Dilution:	<b>ELISA:</b> 1/1000. <b>Western blotting:</b> 1/100 - 1/500. <b>Immunohistochemistry on paraffin sections:</b> 1/50 - 1/100. <b>Flow Cytometry:</b> 1/10 - 1/50.
Reactivity:	Human
Host:	Rabbit
Isotype:	Ig
Clonality:	Polyclonal
Immunogen:	KLH conjugated synthetic peptide between 346-375 amino acids from the Central region of human C6orf70
Specificity:	This antibody reacts to C6orf70.
Formulation:	PBS containing 0.09% (W/V) sodium azide as preservative State: Aff - Purified State: Liquid purified Ig fraction
Concentration:	lot specific
Purification:	Affinity chromatography on Protein A
Conjugation:	Unconjugated
Storage:	Store the antibody undiluted at 2-8°C for one month or (in aliquots) at -20°C for longer. Avoid repeated freezing and thawing.
Stability:	Shelf life: one year from despatch.
Gene Name:	ER membrane-associated RNA degradation
Database Link:	<a href="#">Entrez Gene 55780 Human</a> <a href="#">Q5T6L9</a>
Synonyms:	Transmembrane protein
Note:	<b>Molecular Weight:</b> 77788 Da



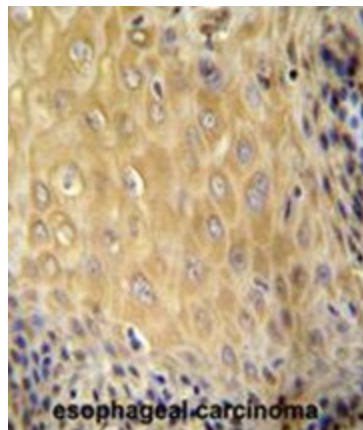
[View online »](#)

Protein Families: Transmembrane

**Product images:**

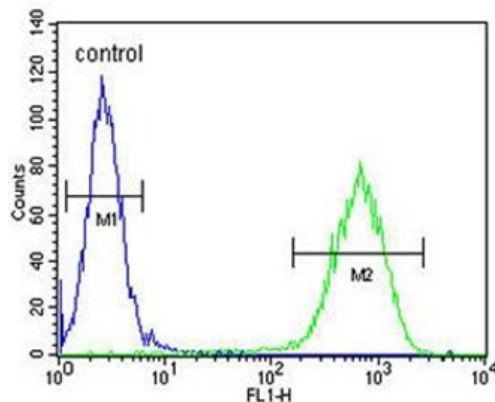


C6orf70 Antibody (Center) western blot analysis in A2058 cell line lysates (35ug/lane). This demonstrates the C6orf70 antibody detected the C6orf70 protein (arrow).



C6orf70 antibody (Center) immunohistochemistry analysis in formalin fixed and paraffin embedded human esophageal carcinoma followed by peroxidase conjugation of the secondary antibody and DAB staining. This data demonstrates the use of the C6orf70 antibody (Center) for immunohistochemistry. Clinical relevance has not been evaluated.

**A2058**



C6orf70 Antibody (Center) flow cytometric analysis of A2058 cells (right histogram) compared to a negative control cell (left histogram). FITC-conjugated goat-anti-rabbit secondary antibodies were used for the analysis.