

Product datasheet for **AP50659PU-N**

C6orf58 (Center) Rabbit Polyclonal Antibody

Product data:

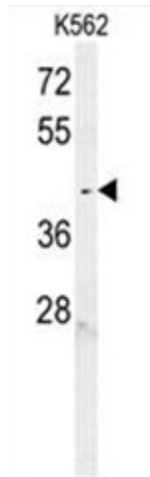
Product Type:	Primary Antibodies
Applications:	FC, IHC, WB
Recommended Dilution:	ELISA: 1/1000. Western blotting: 1/100 - 1/500. Immunohistochemistry on paraffin sections: 1/50 - 1/100. Flow Cytometry: 1/10 - 1/50.
Reactivity:	Human
Host:	Rabbit
Isotype:	Ig
Clonality:	Polyclonal
Immunogen:	KLH conjugated synthetic peptide between 212-241 amino acids from the Central region of human C6orf58
Specificity:	This antibody reacts to C6orf58.
Formulation:	PBS containing 0.09% (W/V) sodium azide as preservative State: Aff - Purified State: Liquid purified Ig fraction
Concentration:	lot specific
Purification:	Affinity chromatography on Protein A
Conjugation:	Unconjugated
Storage:	Store the antibody undiluted at 2-8°C for one month or (in aliquots) at -20°C for longer. Avoid repeated freezing and thawing.
Stability:	Shelf life: one year from despatch.
Gene Name:	chromosome 6 open reading frame 58
Database Link:	Entrez Gene 352999 Human Q6P5S2
Synonyms:	Protein LEG1 homolog
Note:	Molecular Weight: 37926 Da



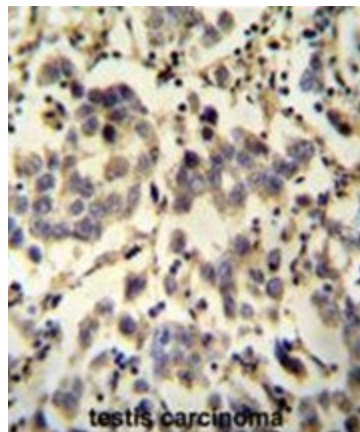
[View online »](#)

Protein Families: Secreted Protein

Product images:

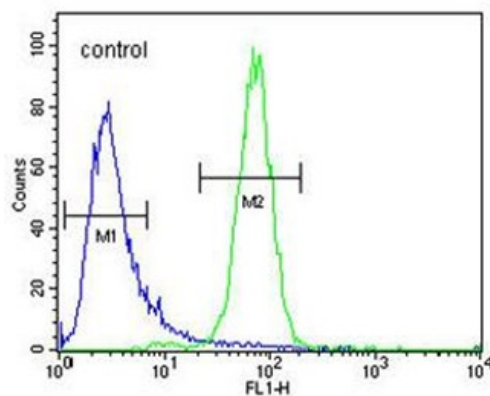


C6orf58 Antibody (Center) western blot analysis in K562 cell line lysates (35ug/lane). This demonstrates the C6orf58 antibody detected the C6orf58 protein (arrow).



C6orf58 antibody (Center) immunohistochemistry analysis in formalin fixed and paraffin embedded human testis carcinoma followed by peroxidase conjugation of the secondary antibody and DAB staining. This data demonstrates the use of the C6orf58 antibody (Center) for immunohistochemistry. Clinical relevance has not been evaluated.

K562



C6orf58 Antibody (Center) flow cytometric analysis of K562 cells (right histogram) compared to a negative control cell (left histogram). FITC-conjugated goat-anti-rabbit secondary antibodies were used for the analysis.