

Product datasheet for **AP50649PU-N**

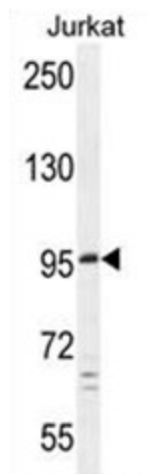
C6orf138 (PTCHD4) (Center) Rabbit Polyclonal Antibody

Product data:

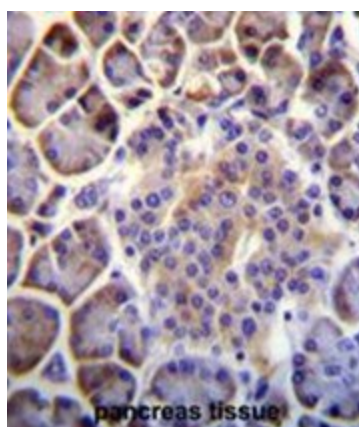
Product Type:	Primary Antibodies
Applications:	IHC, WB
Recommended Dilution:	ELISA: 1/1000. Western blotting: 1/100 - 17500. Immunohistochemistry on paraffin sections: 1/10 - 1/50.
Reactivity:	Human
Host:	Rabbit
Isotype:	Ig
Clonality:	Polyclonal
Immunogen:	KLH conjugated synthetic peptide between 570-599 amino acids from the Central region of human C6orf138
Specificity:	This antibody reacts to C6orf138.
Formulation:	PBS containing 0.09% (W/V) sodium azide as preservative State: Aff - Purified State: Liquid purified Ig fraction
Concentration:	lot specific
Purification:	Affinity chromatography on Protein A
Conjugation:	Unconjugated
Storage:	Store the antibody undiluted at 2-8°C for one month or (in aliquots) at -20°C for longer. Avoid repeated freezing and thawing.
Stability:	Shelf life: one year from despatch.
Gene Name:	patched domain containing 4
Database Link:	Entrez Gene 442213 Human Q6ZW05
Synonyms:	FLJ41841, dj402H5.2, RP3-402H5.2
Note:	Molecular Weight: 96371 Da
Protein Families:	Transmembrane



[View online »](#)

Product images:

C6orf138 Antibody (Center) western blot analysis in Jurkat cell line lysates (35ug/lane). This demonstrates the C6orf138 antibody detected the C6orf138 protein (arrow).



C6orf138 Antibody (Center) immunohistochemistry analysis in formalin fixed and paraffin embedded human pancreas tissue followed by peroxidase conjugation of the secondary antibody and DAB staining. This data demonstrates the use of C6orf138 Antibody (Center) for immunohistochemistry. Clinical relevance has not been evaluated.