

## Product datasheet for **AP50640PU-N**

### **C5R1 (C5AR1) (Center) Rabbit Polyclonal Antibody**

#### **Product data:**

Product Type:	Primary Antibodies
Applications:	FC, WB
Recommended Dilution:	<b>ELISA:</b> 1/1000. <b>Western blotting:</b> 1/100 - 1/500. <b>Flow Cytometry:</b> 1/10 - 1/50.
Reactivity:	Human
Host:	Rabbit
Isotype:	Ig
Clonality:	Polyclonal
Immunogen:	KLH conjugated synthetic peptide between 178-205 amino acids from the Central region of human C5AR1
Specificity:	This antibody reacts to CD88.
Formulation:	PBS containing 0.09% (W/V) sodium azide as preservative State: Aff - Purified State: Liquid purified Ig fraction
Concentration:	lot specific
Purification:	Affinity chromatography on Protein A
Conjugation:	Unconjugated
Storage:	Store the antibody undiluted at 2-8°C for one month or (in aliquots) at -20°C for longer. Avoid repeated freezing and thawing.
Stability:	Shelf life: one year from despatch.
Gene Name:	complement component 5a receptor 1
Database Link:	<a href="#">Entrez Gene 728 Human P21730</a>
Background:	Receptor for the chemotactic and inflammatory peptide anaphylatoxin C5a. This receptor stimulates chemotaxis, granule enzyme release and superoxide anion production.
Synonyms:	C5a-R, C5aR, C5AR1, Complement Component 5a Receptor 1



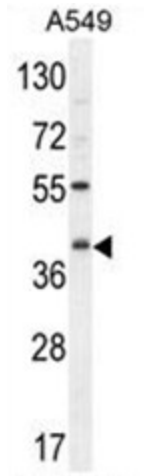
[View online »](#)

**Note:** **Molecular Weight:** 39336 Da

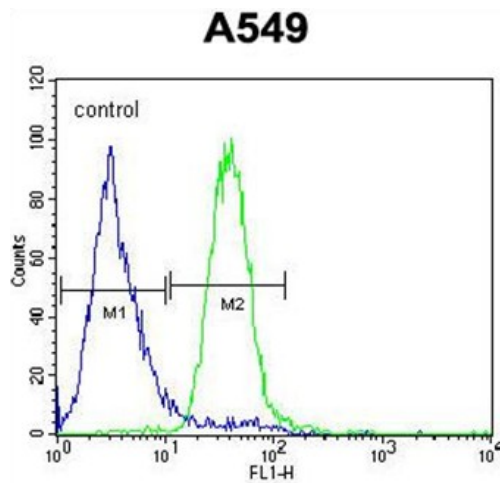
**Protein Families:** Druggable Genome, GPCR, Transmembrane

**Protein Pathways:** Complement and coagulation cascades, Neuroactive ligand-receptor interaction

**Product images:**



C5AR1 Antibody (Center) western blot analysis in A549 cell line lysates (35ug/lane). This demonstrates the C5AR1 antibody detected the C5AR1 protein (arrow).



C5AR1 Antibody (Center) flow cytometric analysis of A549 cells (right histogram) compared to a negative control cell (left histogram). FITC-conjugated goat-anti-rabbit secondary antibodies were used for the analysis.