

Product datasheet for **AP50637PU-N**

C4orf46 (C-term) Rabbit Polyclonal Antibody

Product data:

Product Type:	Primary Antibodies
Applications:	WB
Recommended Dilution:	ELISA: 1/1000. Western blotting: 1/100 - 1/500.
Reactivity:	Human, Mouse
Host:	Rabbit
Isotype:	Ig
Clonality:	Polyclonal
Immunogen:	KLH conjugated synthetic peptide between 91-113 amino acids from the C-terminal region of human C4orf46
Specificity:	This antibody reacts to C4orf46.
Formulation:	PBS containing 0.09% (W/V) sodium azide as preservative State: Aff - Purified State: Liquid purified Ig fraction
Concentration:	lot specific
Purification:	Affinity chromatography on Protein A
Conjugation:	Unconjugated
Storage:	Store the antibody undiluted at 2-8°C for one month or (in aliquots) at -20°C for longer. Avoid repeated freezing and thawing.
Stability:	Shelf life: one year from despatch.
Gene Name:	chromosome 4 open reading frame 46
Database Link:	Entrez Gene 201725 Human Q504U0
Background:	Transcription factor involved in somitogenesis and neurogenesis. Required for the maintenance and differentiation of particular elements of the axial skeleton. May act upstream of PAX9. Plays a role in controlling the development of connections of hypothalamic neurons to pituitary elements, allowing central neurons to reach the peripheral blood circulation and to deliver hormones for control of peripheral functions (By similarity).

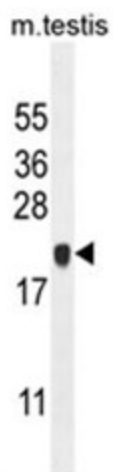


[View online »](#)

Synonyms: LOC201725

Note: **Molecular Weight:** 11899 Da

Product images:



C4orf46 Antibody (C-term) western blot analysis in mouse testis tissue lysates (35ug/lane). This demonstrates the C4orf46 antibody detected the C4orf46 protein (arrow).