

## Product datasheet for **AP50626PU-N**

### **C4orf21 (ZGRF1) (N-term) Rabbit Polyclonal Antibody**

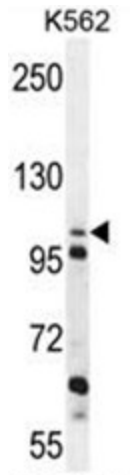
#### **Product data:**

|                       |  |
|-----------------------|--|
| Product Type:         | Primary Antibodies   |
| Applications:         | IF, IHC, WB  |
| Recommended Dilution: | <b>ELISA:</b> 1/1000.<br><b>Western blotting:</b> 1/100 - 1/500.<br><b>Immunohistochemistry on paraffin sections:</b> 1750 -1 /100.<br><b>Immunofluorescence:</b> 1/10 - 1/50. |
| Reactivity:           | Human, Mouse   |
| Host:                 | Rabbit   |
| Isotype:              | Ig   |
| Clonality:            | Polyclonal   |
| Immunogen:            | KLH conjugated synthetic peptide between 45-74 amino acids from the N-terminal region of human C4orf21   |
| Specificity:          | This antibody reacts to C4orf21.   |
| Formulation:          | PBS containing 0.09% (W/V) sodium azide as preservative<br>State: Aff - Purified<br>State: Liquid purified Ig fraction   |
| Concentration:        | lot specific   |
| Purification:         | Affinity chromatography on Protein A   |
| Conjugation:          | Unconjugated   |
| Storage:              | Store the antibody undiluted at 2-8°C for one month or (in aliquots) at -20°C for longer.<br>Avoid repeated freezing and thawing.  |
| Stability:            | Shelf life: one year from despatch.  |
| Gene Name:            | zinc finger GRF-type containing 1  |
| Database Link:        | <a href="#">Entrez Gene 55345 Human</a><br><a href="#">Q86YA3</a>  |
| Synonyms:             | Uncharacterized protein  |
| Note:                 | <b>Molecular Weight:</b> 119347 Da   |

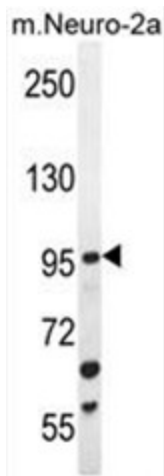


[View online »](#)

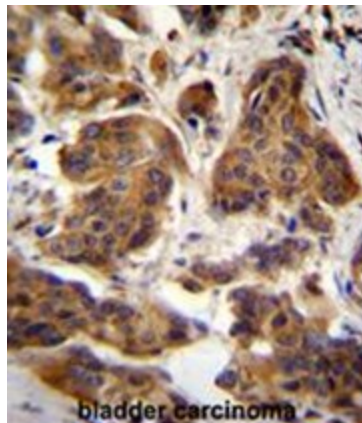
**Product images:**



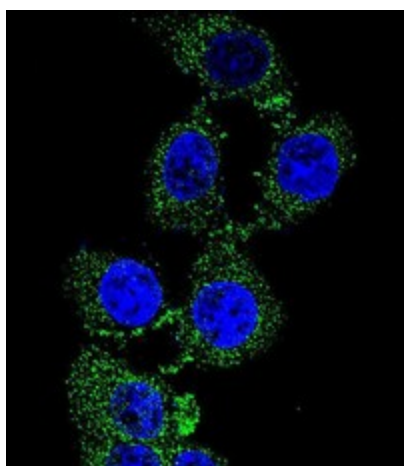
C4orf21 Antibody (N-term) western blot analysis in K562 cell line lysates (35ug/lane). This demonstrates the C4orf21 antibody detected the C4orf21 protein (arrow).



C4orf21 Antibody (N-term) western blot analysis in mouse Neuro-2a cell line lysates (35ug/lane). This demonstrates the C4orf21 antibody detected the C4orf21 protein (arrow).



C4orf21 Antibody (N-term) immunohistochemistry analysis in formalin fixed and paraffin embedded human bladder carcinoma followed by peroxidase conjugation of the secondary antibody and DAB staining. This data demonstrates the use of C4orf21 Antibody (N-term) for immunohistochemistry. Clinical relevance has not been evaluated.



Confocal immunofluorescent analysis of C4orf21 Antibody (N-term) with 293 cell followed by Alexa Fluor 488-conjugated goat anti-rabbit IgG (green). DAPI was used to stain the cell nuclear (blue).