

Product datasheet for **AP50604PU-N**

TSC21 (TEX37) (Center) Rabbit Polyclonal Antibody

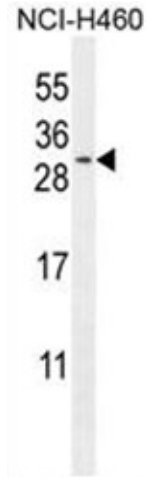
Product data:

Product Type:	Primary Antibodies
Applications:	FC, WB
Recommended Dilution:	ELISA: 1/1000. Western blotting: 1/100 - 1/500. Flow Cytometry: 1/10 - 1/50.
Reactivity:	Human
Host:	Rabbit
Isotype:	Ig
Clonality:	Polyclonal
Immunogen:	KLH conjugated synthetic peptide between 73-101 amino acids from the Central region of human C2orf51
Specificity:	This antibody reacts to C2orf51.
Formulation:	PBS containing 0.09% (W/V) sodium azide as preservative State: Aff - Purified State: Liquid purified Ig fraction
Concentration:	lot specific
Purification:	Affinity chromatography on Protein A
Conjugation:	Unconjugated
Storage:	Store the antibody undiluted at 2-8°C for one month or (in aliquots) at -20°C for longer. Avoid repeated freezing and thawing.
Stability:	Shelf life: one year from despatch.
Gene Name:	testis expressed 37
Database Link:	Entrez Gene 200523 Human Q96LM6
Synonyms:	Protein TSC21,TSC21
Note:	Molecular Weight: 20615 Da



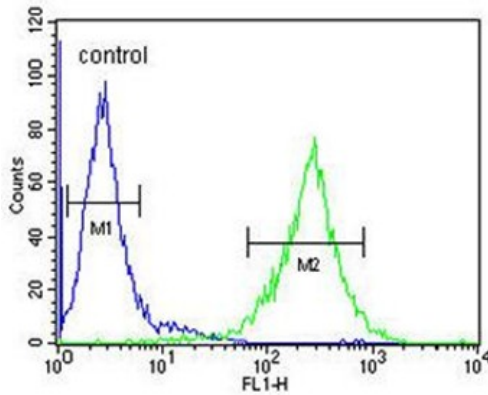
[View online »](#)

Product images:



C2orf51 Antibody (Center) western blot analysis in NCI-H460 cell line lysates (35ug/lane). This demonstrates the C2orf51 antibody detected the C2orf51 protein (arrow).

NCI-H460



C2orf51 Antibody (Center) flow cytometric analysis of NCI-H460 cells (right histogram) compared to a negative control cell (left histogram). FITC-conjugated goat-anti-rabbit secondary antibodies were used for the analysis.