

Product datasheet for **AP50586PU-N**

TSPEAR (Center) Rabbit Polyclonal Antibody

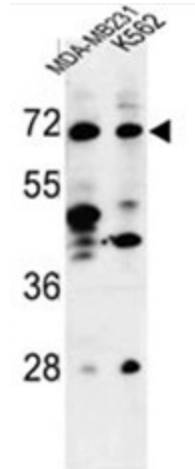
Product data:

Product Type:	Primary Antibodies
Applications:	FC, IHC, WB
Recommended Dilution:	ELISA: 1/1000. Western blotting: 1/100 - 1/500. Immunohistochemistry on paraffin sections: 1/50 - 1/100. Flow cytometric: 1/10 - 1/50.
Reactivity:	Human
Host:	Rabbit
Isotype:	Ig
Clonality:	Polyclonal
Immunogen:	KLH conjugated synthetic peptide between 299~329 amino acids from the Center region of human C21orf29
Specificity:	This antibody reacts to C21orf29.
Formulation:	PBS containing 0.09% (W/V) sodium azide as preservative State: Aff - Purified State: Liquid purified Ig fraction
Concentration:	lot specific
Purification:	Affinity chromatography on Protein A
Conjugation:	Unconjugated
Storage:	Store the antibody undiluted at 2-8°C for one month or (in aliquots) at -20°C for longer. Avoid repeated freezing and thawing.
Stability:	Shelf life: one year from despatch.
Gene Name:	thrombospondin type laminin G domain and EAR repeats
Database Link:	Entrez Gene 54084 Human Q8WU66
Synonyms:	C21orf29; C21orf31; DFNB98; TSP-EAR
Note:	Molecular Weight: 74924 Da

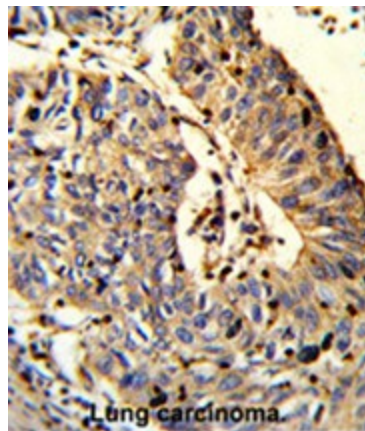


[View online »](#)

Product images:

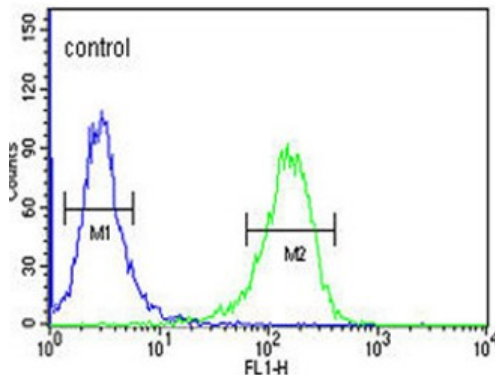


Western blot analysis of C21orf29 Antibody (Center) in MDA-MB231, K562 cell line lysates (35ug/lane). C21orf29 (arrow) was detected using the purified Pab.



Formalin-fixed and paraffin-embedded human Lung carcinoma reacted with C21orf29 Antibody (Center), which was peroxidase-conjugated to the secondary antibody, followed by DAB staining. This data demonstrates the use of this antibody for immunohistochemistry; clinical relevance has not been evaluated.

K562



C21orf29 Antibody (Center) flow cytometric analysis of K562 cells (right histogram) compared to a negative control cell (left histogram). FITC-conjugated goat-anti-rabbit secondary antibodies were used for the analysis.