

## Product datasheet for **AP50567PU-N**

### C1RL (Center) Rabbit Polyclonal Antibody

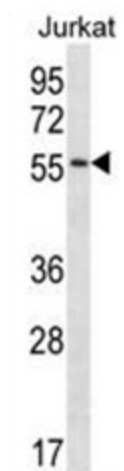
#### Product data:

Product Type:	Primary Antibodies
Applications:	WB
Recommended Dilution:	<b>ELISA:</b> 1/1000. <b>Western blotting:</b> 1/100 - 1/500.
Reactivity:	Human
Host:	Rabbit
Isotype:	Ig
Clonality:	Polyclonal
Immunogen:	KLH conjugated synthetic peptide between 160-190 amino acids from the Central region of human C1RL
Specificity:	This antibody reacts to C1RL.
Formulation:	PBS containing 0.09% (W/V) sodium azide as preservative State: Aff - Purified State: Liquid purified Ig fraction
Concentration:	lot specific
Purification:	Affinity chromatography on Protein A
Conjugation:	Unconjugated
Gene Name:	complement C1r subcomponent like
Database Link:	<a href="#">Entrez Gene 51279 Human Q9NZP8</a>
Background:	C1RL mediates the proteolytic cleavage of HP/haptoglobin in the endoplasmic reticulum.
Synonyms:	C1RL1, C1RLP, CLSPA, C1r-like serine protease analog protein, CLSPa, Complement C1r subcomponent-like protein
Note:	<b>Molecular Weight:</b> 53498 Da
Protein Families:	Druggable Genome, Protease



[View online »](#)

## Product images:



C1RL Antibody (Center) western blot analysis in Jurkat cell line lysates (35ug/lane). This demonstrates the C1RL antibody detected the C1RL protein (arrow).