

## Product datasheet for **AP50565PU-N**

### C1QL4 (N-term) Rabbit Polyclonal Antibody

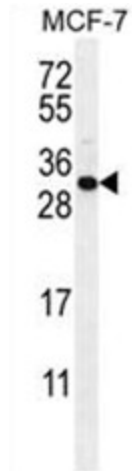
#### Product data:

Product Type:	Primary Antibodies
Applications:	FC, WB
Recommended Dilution:	<b>ELISA:</b> 1/1000. <b>Western blotting:</b> 1/100 - 1/500. <b>Flow Cytometry:</b> 1/10 - 1/50.
Reactivity:	Human
Host:	Rabbit
Isotype:	Ig
Clonality:	Polyclonal
Immunogen:	KLH conjugated synthetic peptide between 7-36 amino acids from the N-terminal region of human C1QL4
Specificity:	This antibody reacts to C1QL4.
Formulation:	PBS containing 0.09% (W/V) sodium azide as preservative State: Aff - Purified State: Liquid purified Ig fraction
Concentration:	lot specific
Purification:	Affinity chromatography on Protein A
Conjugation:	Unconjugated
Storage:	Store the antibody undiluted at 2-8°C for one month or (in aliquots) at -20°C for longer. Avoid repeated freezing and thawing.
Stability:	Shelf life: one year from despatch.
Gene Name:	complement component 1, q subcomponent-like 4
Database Link:	<a href="#">Entrez Gene 338761 Human Q86Z23</a>
Synonyms:	C1QTNF11; MGC131708
Note:	<b>Molecular Weight:</b> 24909 Da
Protein Families:	Secreted Protein

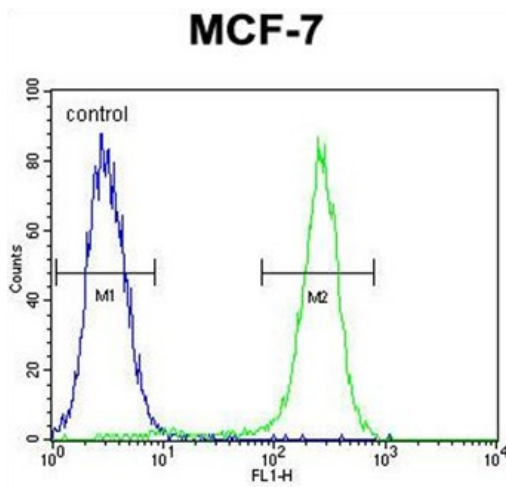


[View online »](#)

Product images:



C1QL4 Antibody (N-term) western blot analysis in MCF-7 cell line lysates (35ug/lane). This demonstrates the C1QL4 antibody detected the C1QL4 protein (arrow).



C1QL4 Antibody (N-term) flow cytometric analysis of MCF-7 cells (right histogram) compared to a negative control cell (left histogram). FITC-conjugated goat-anti-rabbit secondary antibodies were used for the analysis.