

Product datasheet for **AP50564PU-N**

C1QL3 (N-term) Rabbit Polyclonal Antibody

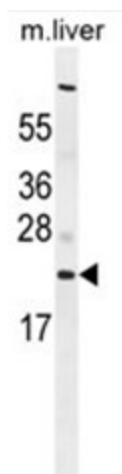
Product data:

Product Type:	Primary Antibodies
Applications:	WB
Recommended Dilution:	ELISA: 1/1000. Western blotting: 1/100 - 1/500.
Reactivity:	Human, Mouse
Host:	Rabbit
Isotype:	Ig
Clonality:	Polyclonal
Immunogen:	KLH conjugated synthetic peptide between 29-57 amino acids from the N-terminal region of human C1QL3
Specificity:	This antibody reacts to C1QL3.
Formulation:	PBS containing 0.09% (W/V) sodium azide as preservative State: Aff - Purified State: Liquid purified Ig fraction
Concentration:	lot specific
Purification:	Affinity chromatography on Protein A
Conjugation:	Unconjugated
Storage:	Store the antibody undiluted at 2-8°C for one month or (in aliquots) at -20°C for longer. Avoid repeated freezing and thawing.
Stability:	Shelf life: one year from despatch.
Gene Name:	complement component 1, q subcomponent-like 3
Database Link:	Entrez Gene 389941 Human Q5VWW1
Background:	May have S-adenosyl-L-methionine-dependent methyl-transferase activity (Potential).
Synonyms:	Complement C1q-like protein 3
Note:	Molecular Weight: 26719 Da
Protein Families:	Secreted Protein



[View online »](#)

Product images:



C1QL3 Antibody (N-term) western blot analysis in mouse liver tissue lysates (35ug/lane). This demonstrates the C1QL3 antibody detected the C1QL3 protein (arrow).