

Product datasheet for **AP50549PU-N**

C1orf51 (CIART) (N-term) Rabbit Polyclonal Antibody

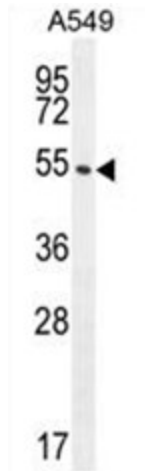
Product data:

Product Type:	Primary Antibodies
Applications:	FC, IHC, WB
Recommended Dilution:	ELISA: 1/1000. Western blotting: 1/100 - 1/500. Immunohistochemistry on paraffin sections: 1/50 - 1/100. Flow Cytometry: 1/10 - 1/50.
Reactivity:	Human
Host:	Rabbit
Isotype:	Ig
Clonality:	Polyclonal
Immunogen:	KLH conjugated synthetic peptide between 25-55 amino acids from the N-terminal region of human C1orf51
Specificity:	This antibody reacts to C1orf51.
Formulation:	PBS containing 0.09% (W/V) sodium azide as preservative State: Aff - Purified State: Liquid purified Ig fraction
Concentration:	lot specific
Purification:	Affinity chromatography on Protein A
Conjugation:	Unconjugated
Storage:	Store the antibody undiluted at 2-8°C for one month or (in aliquots) at -20°C for longer. Avoid repeated freezing and thawing.
Stability:	Shelf life: one year from despatch.
Gene Name:	circadian associated repressor of transcription
Database Link:	Entrez Gene 148523 Human Q8N365
Note:	Molecular Weight: 41443 Da

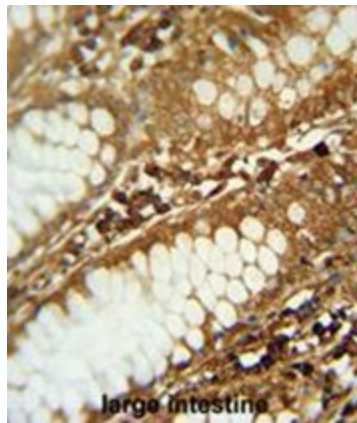


[View online »](#)

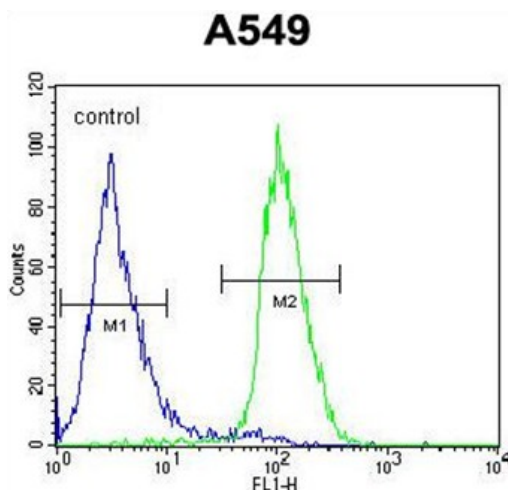
Product images:



C1orf51 Antibody (N-term) western blot analysis in A549 cell line lysates (35ug/lane). This demonstrates the C1orf51 antibody detected the C1orf51 protein (arrow).



C1orf51 antibody (N-term) immunohistochemistry analysis in formalin fixed and paraffin embedded human large intestine followed by peroxidase conjugation of the secondary antibody and DAB staining. This data demonstrates the use of the C1orf51 antibody (N-term) for immunohistochemistry. Clinical relevance has not been evaluated.



C1orf51 Antibody (N-term) flow cytometric analysis of A549 cells (right histogram) compared to a negative control cell (left histogram). FITC-conjugated goat-anti-rabbit secondary antibodies were used for the analysis.