

Product datasheet for **AP50534PU-N**

C1orf144 (SZRD1) (N-term) Rabbit Polyclonal Antibody

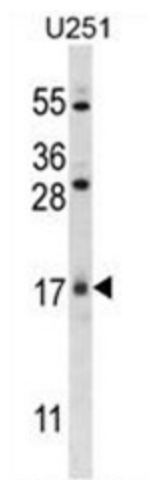
Product data:

Product Type:	Primary Antibodies
Applications:	WB
Recommended Dilution:	ELISA: 1/1000. Western blotting: 1/100 - 1/500.
Reactivity:	Human, Mouse
Host:	Rabbit
Isotype:	Ig
Clonality:	Polyclonal
Immunogen:	KLH conjugated synthetic peptide between 6-36 amino acids from the N-terminal region of human C1orf144
Specificity:	This antibody reacts to C1orf144.
Formulation:	PBS containing 0.09% (W/V) sodium azide as preservative State: Aff - Purified State: Liquid purified Ig fraction
Concentration:	lot specific
Purification:	Affinity chromatography on Protein A
Conjugation:	Unconjugated
Storage:	Store the antibody undiluted at 2-8°C for one month or (in aliquots) at -20°C for longer. Avoid repeated freezing and thawing.
Stability:	Shelf life: one year from despatch.
Gene Name:	SUZ RNA binding domain containing 1
Database Link:	Entrez Gene 213491 Mouse Entrez Gene 26099 Human Q7Z422
Synonyms:	UPF0485 protein C1orf144
Note:	Molecular Weight: 16997 Da

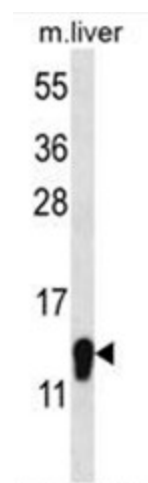


[View online »](#)

Product images:



C1orf144 Antibody (N-term) western blot analysis in U251 cell line lysates (35ug/lane). This demonstrates the C1orf144 antibody detected the C1orf144 protein (arrow).



C1orf144 Antibody (N-term) western blot analysis in mouse liver tissue lysates (35ug/lane). This demonstrates the C1orf144 antibody detected the C1orf144 protein (arrow).