

Product datasheet for **AP50516PU-N**

C19orf50 (KXD1) (Center) Rabbit Polyclonal Antibody

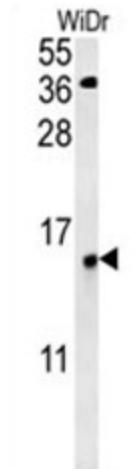
Product data:

Product Type:	Primary Antibodies
Applications:	IHC, WB
Recommended Dilution:	ELISA: 1/1000. Western blotting: 1/100 - 1/500. Immunohistochemistry on paraffin sections: 1/50 - 1/100.
Reactivity:	Human
Host:	Rabbit
Isotype:	Ig
Clonality:	Polyclonal
Immunogen:	KLH conjugated synthetic peptide between 66-95 amino acids from the Central region of human C19orf50
Specificity:	This antibody reacts to C19orf50.
Formulation:	PBS containing 0.09% (W/V) sodium azide as preservative State: Aff - Purified State: Liquid purified Ig fraction
Concentration:	lot specific
Purification:	Affinity chromatography on Protein A
Conjugation:	Unconjugated
Storage:	Store the antibody undiluted at 2-8°C for one month or (in aliquots) at -20°C for longer. Avoid repeated freezing and thawing.
Stability:	Shelf life: one year from despatch.
Gene Name:	KxDL motif containing 1
Database Link:	Entrez Gene 79036 Human Q9BQD3
Synonyms:	UPF0459 protein C19orf50
Note:	Molecular Weight: 19668 Da

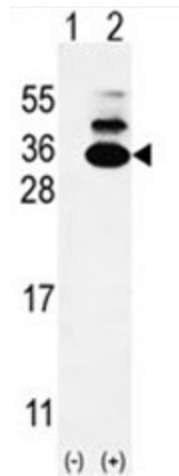


[View online »](#)

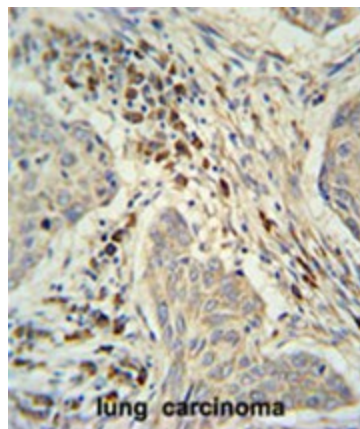
Product images:



C19orf50 Antibody (Center) western blot analysis in WiDr cell line lysates (35ug/lane). This demonstrates the C19orf50 antibody detected the C19orf50 protein (arrow)



Western blot analysis of C19orf50 (arrow) using rabbit polyclonal C19orf50 Antibody (Center). 293 cell lysates (2 ug/lane) either nontransfected (Lane 1) or transiently transfected (Lane 2) with the C19orf50 gene.



C19orf50 Antibody (Center) immunohistochemistry analysis in formalin fixed and paraffin embedded human lung carcinoma followed by peroxidase conjugation of the secondary antibody and DAB staining. This data demonstrates the use of the C19orf50 Antibody (Center) for immunohistochemistry. Clinical relevance has not been evaluated.