

## Product datasheet for **AP50512PU-N**

### **HIDE1 (C19orf38) (Center) Rabbit Polyclonal Antibody**

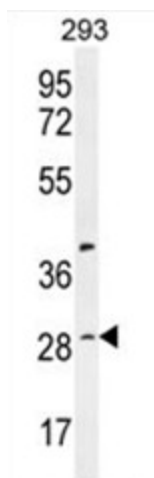
#### Product data:

Product Type:	Primary Antibodies
Applications:	WB
Recommended Dilution:	<b>ELISA:</b> 1/1000. <b>Western blotting:</b> 1/100 - 1/500.
Reactivity:	Human
Host:	Rabbit
Isotype:	Ig
Clonality:	Polyclonal
Immunogen:	KLH conjugated synthetic peptide between 136-167 amino acids from the Central region of human C19orf38
Specificity:	This antibody reacts to C19orf38.
Formulation:	PBS containing 0.09% (W/V) sodium azide as preservative State: Aff - Purified State: Liquid purified Ig fraction
Concentration:	lot specific
Purification:	Affinity chromatography on Protein A
Conjugation:	Unconjugated
Storage:	Store the antibody undiluted at 2-8°C for one month or (in aliquots) at -20°C for longer. Avoid repeated freezing and thawing.
Stability:	Shelf life: one year from despatch.
Gene Name:	chromosome 19 open reading frame 38
Database Link:	<a href="#">Entrez Gene 255809 Human A8MVS5</a>
Synonyms:	Protein HIDE1,HIDE1
Note:	<b>Molecular Weight:</b> 24753 Da



[View online »](#)

## Product images:



C19orf38 Antibody (Center) western blot analysis in 293 cell line lysates (35ug/lane). This demonstrates the C19orf38 antibody detected the C19orf38 protein (arrow).